

CATALOGUE

SLIDE



SLIDE

INDICE

WE MAKE

- 2 twenty years of making
- 6 in Italy
- 8 sustainable
- 10 design
- 12 art
- 14 all for you
- 16 you happy
- 18 together with you
- 20 with love

PRODUCTS

- 22 icons
- 34 furniture
- 114 lights
- 172 hospitality
- 224 complements

MATERIALS

- 266 standard polyethylene
- 268 special standard polyethylene
- 270 lighting polyethylene
- 272 special lighting finishing
- 274 lacquered matt/glossy
- 276 soft polyurethane
- 278 textile
- 280 hpl

INDICE per CATEGORIA

SEDUTE

208	AMÉLIE	74	PONENTE
208	AMÉLIE DUETTO	218	PRINCESS OF LOVE
208	AMÉLIE PANCHETTA	214	Q4
208	AMÉLIE SGABELLO	106	QUEEN OF LOVE
208	AMÉLIE SIT UP	78	RAP
230	AMORE	78	RAP CHAIR
36	BIG KROKO	54	RIBS
88	BLOS	54	RIBS UP
88	BLOSSY	191	SNAKE
222	BOT ONE	193	SOFT CUBO
92	CHUBBY	192	SOFT SNAKE
92	CHUBBY LOW	222	SUMMERTIME
112	CUBO POUF	113	TARTA
112	DOUBLE U	36	THREEBÙ
223	DOUBLIX	113	TIC TAC
202	DRINK	223	VOILÀ
223	EXOFA	262	WAVE
112	GEAR	232	WOW
100	GELÉE	222	YPSILON
100	GELÉE GRAND	110	ZOE
100	GELÉE LOUNGE		
190	GIÒ POUF		
198	GLORIA		
199	GLORIA MEETING		
96	HAPPYLIFE		
262	IRON		
82	KAMI ICHI		
82	KAMI SAN		
82	KAMI YON		
204	KONCORD		
36	KROKO		
223	LAZY BONES		
108	LITTLE PRINCE OF LOVE		
109	LITTLE QUEEN OF LOVE		
64	LOW LITA		
64	LOW LITA LOUNGE		
64	LOW LITA LOVE		
58	MARA		
58	MARA POUF		
58	MARA SOFA		
216	MISTER OF LOVE		
32	PANDORO		

TAVOLI

228	AMANDA
226	AMBROGIO
208	AMÉLIE UP
113	AMORE TABLE
88	BLOS LOW TABLE
92	CHUBBY SIDE TABLE
24	DUKE OF LOVE
111	ED
223	FIZZ
215	GINO
200	HOPLÀ
206	JET
82	KAMI NI
219	LORD OF LOVE
64	LOW LITA TABLE
58	MARA LOW TABLE
217	MASTER OF LOVE
46	OTTOCENTO
46	OTTOCENTO MINI
203	PEAK
196	PINT

220	SIR OF LOVE
113	SLOTH
197	SQUARE
113	TAO
113	TARTA LOW TABLE
113	TEA TIME
112	TOY
223	X2

COMPLE- MENTI

238	BOOKY
234	FRAME OF LOVE
240	HEXA
243	JOKER OF LOVE
245	KALIMERA
262	KOKÒ BOOK
244	LIGHT DRINK
262	MAG
236	MIRROR OF LOVE
263	MR. GIÒ
263	MR. GIÒ SPECCHIO
239	MYBOOK
263	MYFLOWER
242	OPEN CUBE
263	PIXEL

BANCONI

180	BREAK BAR
180	BREAK CORNER
180	BREAK LINE
174	CORDIALE
174	CORDIALE CORNER
174	CORDIALE WELCOME
180	ICE BAR
185	JUMBO BAR
185	JUMBO CORNER
187	ROLLER BAR
184	SNACK BAR
188	SPLAY
186	SWISH

VASI

252	BAMBOO
256	BASE POT
260	BIG GIÒ
88	BLOS POT
263	CUBIC YO
257	GEAR POT
260	GIÒ MONSTER
260	GIÒ TONDO
258	IL VASO
263	MON AMOUR
254	PRIVÉ
250	QUADRA
251	QUADRA SEPARÉ
263	STAR
36	THREEBÙ POT
255	WAVE POT
246	X-POT
248	Y-POT

LAMPADE

158	ACQUAGLOBO
148	ALI BABA STEEL
150	ALI BABA WOOD
138	ALLURE
139	AURA
170	BIJOUX
169	BUBO
168	CARMEN
170	CONO
125	CORDIALE APPLIQUE
124	CORDIALE LUMIÈRE
135	CROWN OF LOVE
156	CUBO
156	CUBO HANGING
140	CUCUN
132	CUPOLE
134	DAME OF LOVE
154	DINO
131	ELIOS
149	FIACCOLA ALI BABA
169	FIAMMA

169	FIAMMETTA	32	SIRIO
170	FLUO	126	SPIN
128	FLUX	116	STILETTO APPLIQUE
128	FLUX HANGING	116	STILETTO SHARD
128	FLUX UP	116	STILETTO X
120	GIOTTO	116	STILETTO Y
158	GLOBO	171	SUNDAY
158	GLOBO HANGING	170	THERE
158	GLOBO TIGE	36	THREEBÙ TOTEM
171	GLOBO WALL		
151	GLOBO WOOD		
168	HERE		
171	ICO		
30	JUMPIE		
30	JUNIOR		
171	JUXT		
152	KING OF LOVE		
168	KOKÒ		
169	KOLME		
169	KUUSI		
24	LADY OF LOVE		
170	LIGHTTREE		
169	LOVE		
136	LUNA		
153	MADAME OF LOVE		
170	MANHATTAN		
32	MERRY CUBO		
171	MESH		
162	MINERAL		
162	MINERAL HANGING		
162	MINERAL STAND		
162	MINERAL TIGE		
171	MOLLY		
222	MOON		
166	MURANO		
166	MURANO HANGING		
166	MURANO TIGE		
168	OTELLO		
30	OTELLO MINI		
146	PIVOT		
130	PLUME		
169	PRÊT-À-PORTER		
144	PUPA		
169	PURE		

INDICE ALFABETICO

A							
158	ACQUAGLOBO	125	CORDIALE APPLIQUE	100	GELÉE GRAND	82	KAMI SAN
148	ALI BABA STEEL	174	CORDIALE CORNER	100	GELÉE LOUNGE	82	KAMI YON
150	ALI BABA WOOD	124	CORDIALE LUMIÈRE	215	GINO	152	KING OF LOVE
138	ALLURE	174	CORDIALE WELCOME	260	GIÒ MONSTER	168	KOKÒ
228	AMANDA	135	CROWN OF LOVE	190	GIÒ POUF	262	KOKÒ BOOK
226	AMBROGIO	263	CUBIC YO	260	GIÒ TONDO	169	KOLME
208	AMÉLIE	156	CUBO	120	GIOTTO	204	KONCORD
208	AMÉLIE DUETTO	156	CUBO HANGING	158	GLOBO	36	KROKO
208	AMÉLIE PANCHETTA	112	CUBO POUF	158	GLOBO HANGING	169	KUUSI
208	AMÉLIE SGABELLO	140	CUCUN	158	GLOBO TIGE		
208	AMÉLIE SIT UP	132	CUPOLE	171	GLOBO WALL	L	
208	AMÉLIE UP	D		151	GLOBO WOOD	24	LADY OF LOVE
230	AMORE	134	DAME OF LOVE	198	GLORIA	223	LAZY BONES
113	AMORE TABLE	154	DINO	199	GLORIA MEETING	244	LIGHT DRINK
139	AURA	112	DOUBLE U	H		170	LIGHTREE
		223	DOUBLIX	96	HAPPYLIFE	108	LITTLE PRINCE OF LOVE
		202	DRINK	168	HERE	109	LITTLE QUEEN OF LOVE
		24	DUKE OF LOVE	240	HEXA	219	LORD OF LOVE
				200	HOPLÀ	169	LOVE
B						64	LOW LITA
252	BAMBOO	E		I		64	LOW LITA LOUNGE
256	BASE POT	111	ED	180	ICE BAR	64	LOW LITA LOVE
260	BIG GIÒ	131	ELIOS	171	ICO	64	LOW LITA TABLE
36	BIG KROKO	223	EXOFA	258	IL VASO	136	LUNA
170	BIJOUX	F		262	IRON		
88	BLOS	149	FIACCOLA ALI BABA	J		153	MADAME OF LOVE
88	BLOS LOW TABLE	169	FIAMMA	206	JET	262	MAG
88	BLOS POT	169	FIAMMETTA	243	JOKER OF LOVE	170	MANHATTAN
88	BLOSSY	223	FIZZZ	185	JUMBO BAR	58	MARA
238	BOOKY	170	FLUO	185	JUMBO CORNER	58	MARA LOW TABLE
222	BOT ONE	128	FLUX	30	JUMPIE	58	MARA POUF
180	BREAK BAR	128	FLUX HANGING	30	JUNIOR	58	MARA SOFA
180	BREAK CORNER	128	FLUX UP	171	JUXT	217	MASTER OF LOVE
180	BREAK LINE	234	FRAME OF LOVE			32	MERRY CUBO
169	BUBO	G		K		171	MESH
		112	GEAR	245	KALIMERA	162	MINERAL
C		257	GEAR POT	82	KAMI ICHI	162	MINERAL HANGING
168	CARMEN	100	GELÉE	82	KAMI NI	162	MINERAL STAND
92	CHUBBY					162	MINERAL TIGE
92	CHUBBY LOW					236	MIRROR OF LOVE
92	CHUBBY SIDE TABLE					216	MISTER OF LOVE
170	CONO						
174	CORDIALE						

171 MOLLY
263 MON AMOUR
222 MOON
263 MR. GIÒ
263 MR. GIÒ SPECCHIO
166 MURANO
166 MURANO HANGING
166 MURANO TIGE
239 MYBOOK
263 MYFLOWER

O

242 OPEN CUBE
168 OTELLO
30 OTELLO MINI
46 OTTOCENTO
46 OTTOCENTO MINI

P

32 PANDORO
203 PEAK
196 PINT
146 PIVOT
263 PIXEL
130 PLUME
74 PONENTE
169 PRÊT-À-PORTER
218 PRINCESS OF LOVE
254 PRIVÉ
144 PUPA
169 PURE

Q

214 Q4
250 QUADRA
251 QUADRA SEPARÉ
106 QUEEN OF LOVE

R

78 RAP

78 RAP CHAIR
54 RIBS
54 RIBS UP
187 ROLLER BAR

S

220 SIR OF LOVE
32 SIRIO
113 SLOTH
184 SNACK BAR
191 SNAKE
193 SOFT CUBO
192 SOFT SNAKE
126 SPIN
188 SPLAY
197 SQUARE
263 STAR
116 STILETTO APPLIQUE
116 STILETTO SHARD
116 STILETTO X
116 STILETTO Y
222 SUMMERTIME
171 SUNDAY
186 SWISH

T

113 TAO
113 TARTA
113 TARTA LOW TABLE
113 TEA TIME
170 THERE
36 THREEBÙ
36 THREEBÙ POT
36 THREEBÙ TOTEM
113 TIC TAC
112 TOY

V

223 VOILÀ

W

262 WAVE
255 WAVE POT
232 WOW

X

246 X-POT
223 X2

Y

248 Y-POT
222 YPSILON

Z

110 ZOE

We Make

TWENTY YEARS OF MAKING

“In questi vent’anni abbiamo creato sempre nuovi protagonisti capaci di distinguersi e di renderci unici. Abbiamo così lavorato per creare prodotti che identificassero in maniera univoca SLIDE, come un segno distintivo: i mobili luminosi, i complementi pop, la collezione Design of Love, le panchine Amore e WOW, i tavolini Ambrogio e Amanda, la collezione Afrika...Tutti questi affiancati alle poltrone, alle sedie, ai tavoli più classici e alle lampade dal design contemporaneo ed elegante”.

Giò Colonna Romano



Siamo giunti al nostro ventesimo anno di attività, un traguardo ma anche un punto di partenza, in cui abbiamo adoperato la nostra arte del fare per realizzare arredi e luci che rendono più preziosi i luoghi dove avvengono le storie di ognuno di noi. "Fare" per noi ha un significato duplice: siamo produttori, per questo conosciamo fino all'ultima particella utilizzata per creare i mobili; ma siamo anche creatori di idee, in cui il nostro "We Make", la nostra filosofia, si plasma su un progetto iniziale studiato internamente o con i designer di fama internazionale che in questi venti anni hanno collaborato con noi. Seppur giovane, la nostra storia è quella di un'azienda nata dalla voglia di dare forma a idee e intuizioni che poi sono diventati i nostri punti fermi.

Nel 2002 Giò Colonna Romano fonda SLIDE, con il desiderio di creare stupore e meraviglia. La prima intuizione è arrivata addirittura prima della nascita di SLIDE: forme semplici, come sfere e cubi, creati con materiali traslucidi, la cui lampadina all'interno fa uscire una luce omogenea che arreda. Semplice e magico. Con la conoscenza trentennale dei materiali plastici, ci siamo spinti oltre, per sprigionare tutte le potenzialità dello stampaggio rotazionale, ed ecco che la seconda geniale intuizione è il mobile luminoso, diventato ben presto un must-have nel settore degli eventi. Tutto questo ha portato SLIDE ad essere conosciuta in tutto il mondo.

FONDAZIONE DI SLIDE

con l'intento di entrare nel mondo del Design. L'Arch. Guglielmo Berchicci ne è l'Art Director e disegna i primi prodotti, ancora oggi a catalogo.



Partecipazione alla fiera Euroluce.

Apertura divisione eventi SLIDE EVENTS e prime collaborazioni con designer di fama internazionale. Marcel Wanders disegna per SLIDE la Chubby Collection.

Prima partecipazione al Salone del Mobile. Apertura di SLIDE SHOPPING e-commerce istituzionale. Inizio collaborazione con Nastro Azzurro, primo grande cliente Beverage.

1998 — 2002 — 2003 — 2005 — 2006 — 2007 — 2009 — 2010 — 2011

Giò Colonna Romano crea e produce le prime forme geometriche luminose Globo e Cubo destinate al mondo garden.



Partecipazione alle fiere Abitare il Tempo e Light & Building.

Nasce Jumbo Bar, il primo mobile luminoso che spopola nel mondo degli eventi e diventa il marchio distintivo di SLIDE.



Paola Navone disegna per SLIDE la Low Lita Collection. Lo sgabello Konkord di Karim Rashid vince il Good Design Award.

Creazione della Collezione SLIDE ART e partecipazione alla Biennale di Venezia. Apertura linea di verniciatura interna per offrire prodotti laccati destinati al mercato dell'indoor per una fascia più alta di clientela.

Nel corso della sua storia, SLIDE ha saputo crescere, innovare e differenziarsi, offrendo un arredo completo per l'outdoor e l'illuminazione di grandi spazi, di progetti residenziali e contract, ma anche piccoli protagonisti per la casa.

Con il cambio generazionale avviatosi nel 2015, Marco Colonna Romano, supportato da un team giovane e appassionato, trasforma SLIDE in un brand di design a tutti gli effetti, aumentando l'offerta e affiancando alla tipica produzione pop e colorata una linea sempre più articolata e raffinata, in grado di soddisfare i gusti degli architetti e ideale per il settore hotellerie e contract.

L'immagine che ne risulta è di un'azienda giovane e innovativa che poggia su solidi principi fin dalla sua nascita: l'alta qualità del Made in Italy e la continua ricerca dell'eccellenza della tecnologia dello stampaggio rotazionale. A forme e colori giocosi, si aggiungono così combinazioni con altri materiali, nuove texture tattili e sfumature e nuance che solo SLIDE è capace di realizzare. Sempre radicata nel suo territorio di origine – a Buccinasco, alle porte di Milano – dove hanno sede gli uffici e il polo produttivo, SLIDE porta il suo nome e i suoi prodotti in più di 130 paesi in tutto il mondo.

TWENTY YEARS OF MAKING



Apertura linea di produzione del poliuretano morbido allargando l'offerta commerciale contract. Presentazione della collezione di arredi Kami di Marc Sadler.

Cambio generazionale: Marco Colonna Romano diventa AD di SLIDE. Apertura per EXPO 2015 di SLIDE Lounge, uno showroom dinamico e temporary bar.



Redazione del primo bilancio di sostenibilità. Il tavolino Ambrogio di Favaretto&Partners, primo prodotto in plastica seconda vita, diventa immediatamente un best seller.

Apertura dello Showroom SLIDE in Foro Buonaparte a Milano.

2012 — 2013 — 2014 — 2015 — 2016 — 2017 — 2019 — 2021 — 2022

SLIDE entra nel programma Elite di Borsa Italiana. Nuove collezioni disegnate da Alessandro Mendini.

Acquisizione della collezione Design of Love e successivo ampliamento.



L'Arch. Roberto Paoli diventa Art Director di SLIDE.

Il concept "Contemporary Tradition" prende vita grazie alle collezioni di Lorenza Bozzoli, Fabio Novembre e Roberto Paoli. La produzione industriale si affianca così al lavoro artigianale.



Lancio della collezione Afrika, che segna anche l'inizio della collaborazione con l'artista e designer Marcantonio. **E CONTINUA...**

We Make
IN ITALY



Fin dal principio, uno dei nostri obiettivi è stato quello di portare la qualità, la creatività e la cultura del Design Made in Italy in tutto il mondo, nel segno di un materiale che ci permette di esprimere al massimo le nostre potenzialità: il polietilene a bassa densità, lavorato secondo un processo che mira a ridurre al minimo le emissioni parzialmente nocive. Grazie alla collaborazione di tutti i reparti con il dipartimento di ricerca e sviluppo, negli anni siamo riusciti a unire un'anima artigianale al

processo industriale. Nasce così una linea in cui nuance e finiture diventano non replicabili e ogni prodotto risulta così unico.

Vogliamo che il nostro Made in Italy sia una scelta etica, in cui le idee e la realizzazione delle stesse avvengono tutte all'interno dello stesso stabilimento. Scegliere un prodotto SLIDE vuol dire scegliere un design sostenibile e permettere che la bellezza e la qualità siano alla portata di tutti.



We Make
SUSTAINABLE



La nostra produzione è interamente svolta nell'ottica del percorso virtuoso dell'economia circolare. A iniziare dalla nostra tecnologia dello stampaggio rotazionale, che riduce al minimo le emissioni potenzialmente nocive e con un basso impatto ambientale. Inoltre, grazie all'installazione di pannelli solari sui nostri capannoni, abbiamo dato una netta svolta nell'utilizzo di fonti rinnovabili che rendono l'azienda ancora più indipendente dal punto di vista energetico. Creati in polietilene 100% riciclabile, i nostri prodotti arrivati a fine vita ritornano polvere plastica, pronta ad essere utilizzata per altri mobili, in particolare nel colore Jet Black, 100% riciclato. Il riciclo, altresì, dà vita alla sezione più raffinata della nostra collezione, tramite la laccatura del prodotto, nostro fiore all'occhiello. La verniciatura della superficie dei nostri prodotti permette di coprire eventuali graffi o piccole imperfezioni che possono nascere in fase di produzione e di recuperarli così in oggetti molto più alti, con la stessa resistenza di tutti gli altri.

Grazie al nostro dipartimento di Ricerca e Sviluppo e ai nostri fornitori abbiamo introdotto nuove materie prime, più etiche e durevoli. Ambrogio e Amanda sono infatti prodotti con una nuova plastica, Geco, composta al 30% da Ecoallene, un materiale interamente riciclato proveniente dalle scatole di Tetrapack, altrimenti destinate agli inceneritori. La collezione Afrika, nei suoi colori più materici, è realizzata in bioplastica, un nuovo materiale che deriva dalle fibre naturali della canna da zucchero. Nelle nuove collezioni abbiamo voluto guardare non solo all'estetica del prodotto ma anche alla bellezza del mondo che ci circonda, che vogliamo preservare grazie al basso impatto ambientale.



We Make DESIGN



ALESSANDRO MENDINI



GIÒ COLONNA ROMANO



FABIO NOVEMBRE



ROBERTO PAOLI



STEFANO GIOVANNONI



KARIM RASHID



ITALO PERTICHINI



ILARIA MARELLI



FLAVIO LUCCHINI



GIULIO CAPPELLINI



ANTONIO LANZILLO & PARTNERS



AKSU & SUARDI STUDIO

La forza dei nostri prodotti nasce anche dalla collaborazione con alcune tra le menti più brillanti nel panorama del design internazionale. In questi venti anni di attività, il nostro catalogo è cresciuto insieme a loro.

In questi venti anni sono entrati a far parte della nostra famiglia tantissimi nomi: abbiamo collaborato con circa quaranta creativi di tutto il mondo, alcuni di loro già affermati, altri invece giovani talenti molto promettenti.



MARCANTONIO



PAOLA NAVONE



GUGLIELMO BERCHICCI



MARTINELLI VENEZIA STUDIO



MORO & PIGATTI



FAVARETTO&PARTNERS



MARC SADLER



LORENZA BOZZOLI



MARCEL WANDERS

We Make
ART



KARIM RASHID - TWIST, 2011

SLIDE Art è un progetto di opere scultoree in cui Arte e Design si incontrano unendo le loro principali peculiarità: il Design diventa un'opera più alta concettualmente, mentre l'Arte diventa un prodotto riproducibile serialmente, in numero limitato. Il pensiero e la creatività incontrano così l'artigianalità italiana dando vita a un nuovo concetto di Arte, che plasma la materia innalzandola a opere scultoree prodotte in pezzi limitati, numerati e certificati.

SLIDE Art è una fucina di idee in cui designer e artisti possono sperimentare forme, materiali e concept, supportati dalle competenze, conoscenze ed esperienza maturate da SLIDE, in un dialogo capace di unire in un'unica opera due anime, quella del Design e quella dell'Arte, così affini e così diverse. Alessandro Mendini, Karim Rashid, Anna Gili, Sacha Sosno, Jean Claude Fahry e Ben Vautier sono solo alcuni dei nomi di lustro che hanno partecipato al progetto.



We Make
ALL FOR YOU



Nel corso degli anni, abbiamo migliorato il comfort, insieme all'omogeneità della luce e l'ergonomia dei prodotti. Così abbiamo sviluppato mobili sempre più elaborati, abbiamo giocato con texture e nuance capaci di impreziosire il polietilene, abbiamo ricercato elementi e accessori che innalzassero il nostro prodotto a un bene raffinato.

Abbiamo perfezionato le nostre luci, così che fossero capaci di regalare atmosfere ancor più suggestive. Da ciò emerge un'offerta di arredo completo per ogni tipo di progetto contract indoor e outdoor.



25 HOURS HOTEL - FLORENCE (ITALY)



FREYSITZ BAR - HALLEIN (AUSTRIA)



MERCI DESIGN SHOP - PARIS (FRANCE)

We Make YOU HAPPY



#IRONY



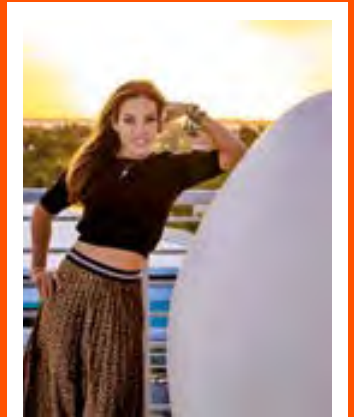
#WONDER



#DREAMTEAM



#LOVE



#HAPPINESS



#RENOVATION

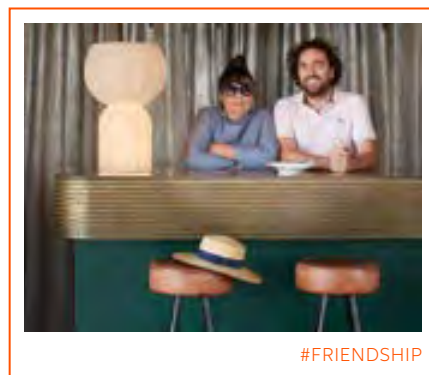
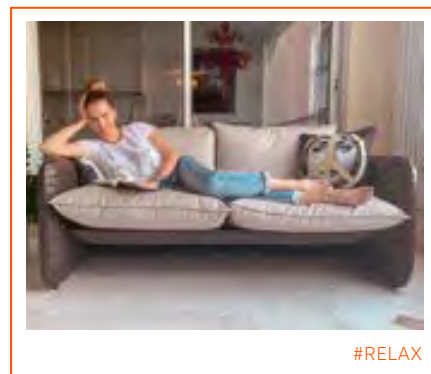
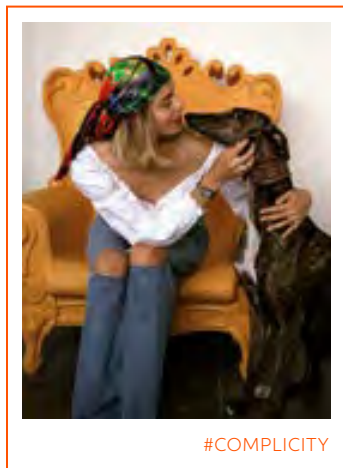
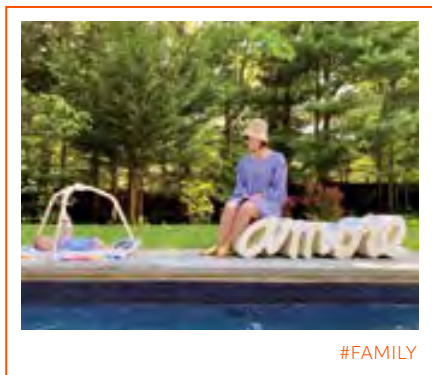
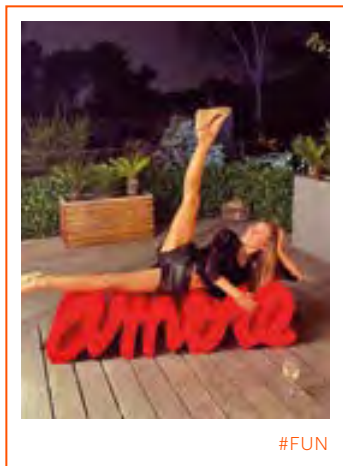


#SPIRITUAL

Condividere i vostri momenti preziosi con noi è ciò che ci rende fieri di quello che facciamo. Ci piace pensare che ogni nostro prodotto non sia solo un oggetto, ma un piccolo protagonista che abita il mondo in cui tutti noi viviamo e che, tramite i nostri comportamenti e abitudini, concorriamo a modificare.

Siamo contenti quando riuscite a migliorare il mondo che vi circonda, insieme a un nostro prodotto: durevole, sostenibile, amabile.

Un grazie a tutti voi che ci avete scelto.



We Make

TOGETHER WITH YOU



Magia e stupore sono racchiusi in mobili leggeri, resistenti e facili da spostare. Dal desiderio di far sì che ogni evento sia unico ed indimenticabile, nasce la possibilità di modulare e personalizzare i nostri mobili con i vostri loghi, colori e accessori. Tantissimi sono stati, in questi ultimi 20 anni, gli allestimenti a cui abbiamo

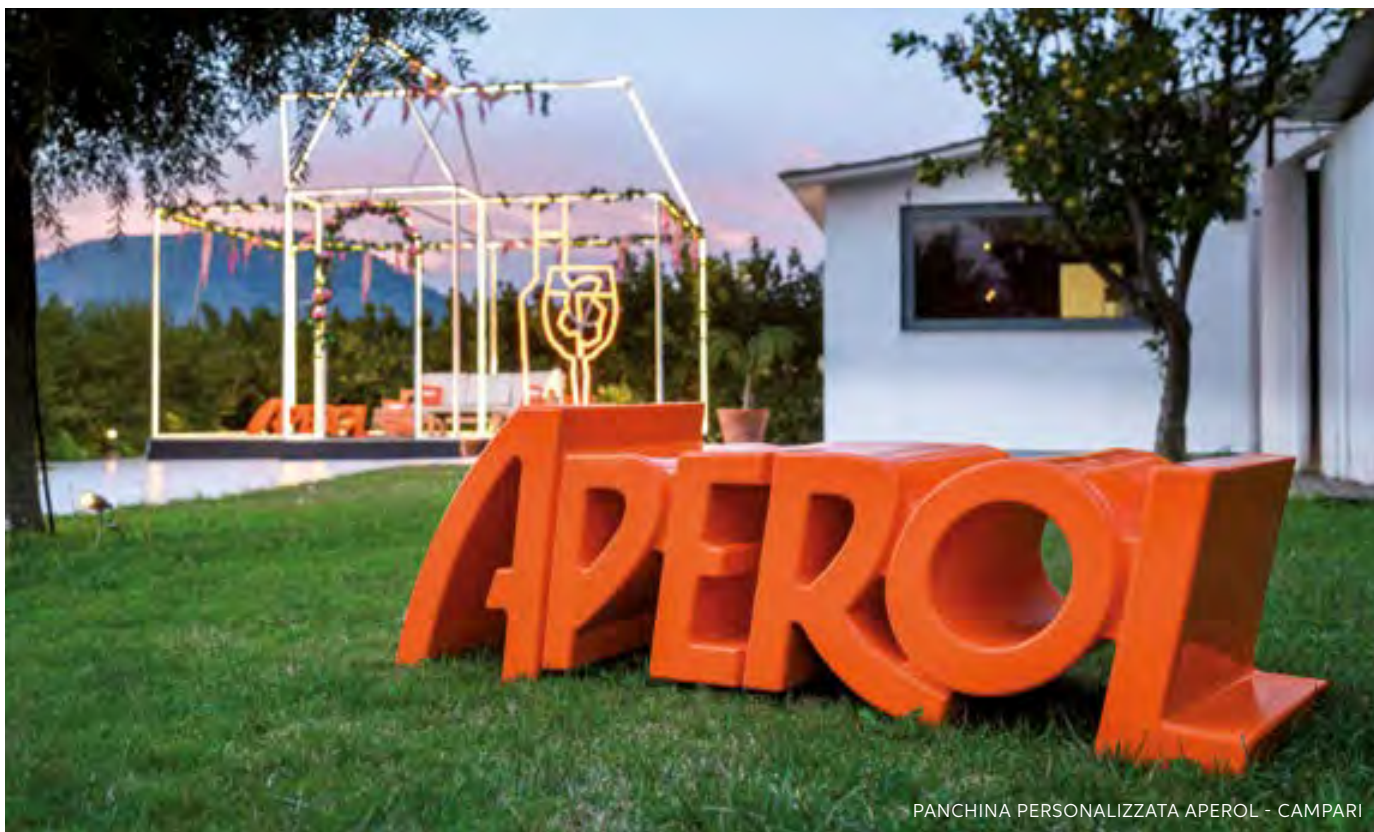
preso parte, che ci hanno portato a festeggiare con voi eventi privati e aziendali e ad arredare le vostre vetrine. Non potremmo essere più felici nel vedervi trascorrere momenti memorabili in compagnia dei nostri arredi.



CLUB MORITZINO - CANTINE FERRARI



EMPORIO ARMANI WINTER EVENT



PANCHINA PERSONALIZZATA APEROL - CAMPARI

We Make
WITH LOVE



Sono stati 20 anni pieni di innovazione, di novità e di scoperte: un vortice che ci ha portato a sviluppare sempre più linee di prodotti e a differenziare la nostra offerta per dare il prodotto giusto ai vostri progetti. Il nostro catalogo si presenta come una guida per le vostre necessità: dai complementi fino a una larga parte dedicata al mondo dei progetti e degli eventi.

Un viaggio attraverso la nostra arte del fare, plasmata per voi e con voi con l'intento di donarvi un ambiente perfetto in cui vivere le vostre emozioni.



We Make ICONS

In questi vent'anni abbiamo creato complementi dal design inimitabile per rendere indimenticabili i vostri spazi. Cinque modi di essere diversi, ognuno con la sua unicità.





BE GLAMOUROUS
BE POP
BE COLOURFUL
BE BRIGHT
BE MERRY

BE GLAMOUROUS

Per spiriti contemporanei, ma con un look più distinto. I nostri prodotti laccati donano un gusto glamour e raffinato in ogni ambientazione indoor e outdoor, grazie alla superficie elegante e a colori ricercati e personalizzabili.



1. **IL VASO** vaso | p. 258
2. **HERE** lampada da tavolo | p. 168
3. **MINERAL STAND** lampada da terra | p. 162
4. **MIRROR OF LOVE size L** specchio | p. 236
5. **MIRROR OF LOVE size XL** specchio | p. 236
6. **AMBROGIO** tavolino di servizio | p. 226
7. **AMANDA** tavolino di servizio | p. 228
8. **LADY OF LOVE** lampada da tavolo
9. **AMORE** panchina | p. 230
10. **MINERAL STAND** lampada da tavolo | p. 162
11. **DUKE OF LOVE** tavolino
12. **CUBIC YO** vaso | p. 263



BE POP

Per gli amanti del colore e delle forme inusuali, il nostro stile pop ravviva gli ambienti. Colori vivaci e design emozionale, i nostri prodotti sono pronti per trasformarsi nell'elemento perfetto per contraddistinguersi, per lanciare un messaggio o per un tocco unico.

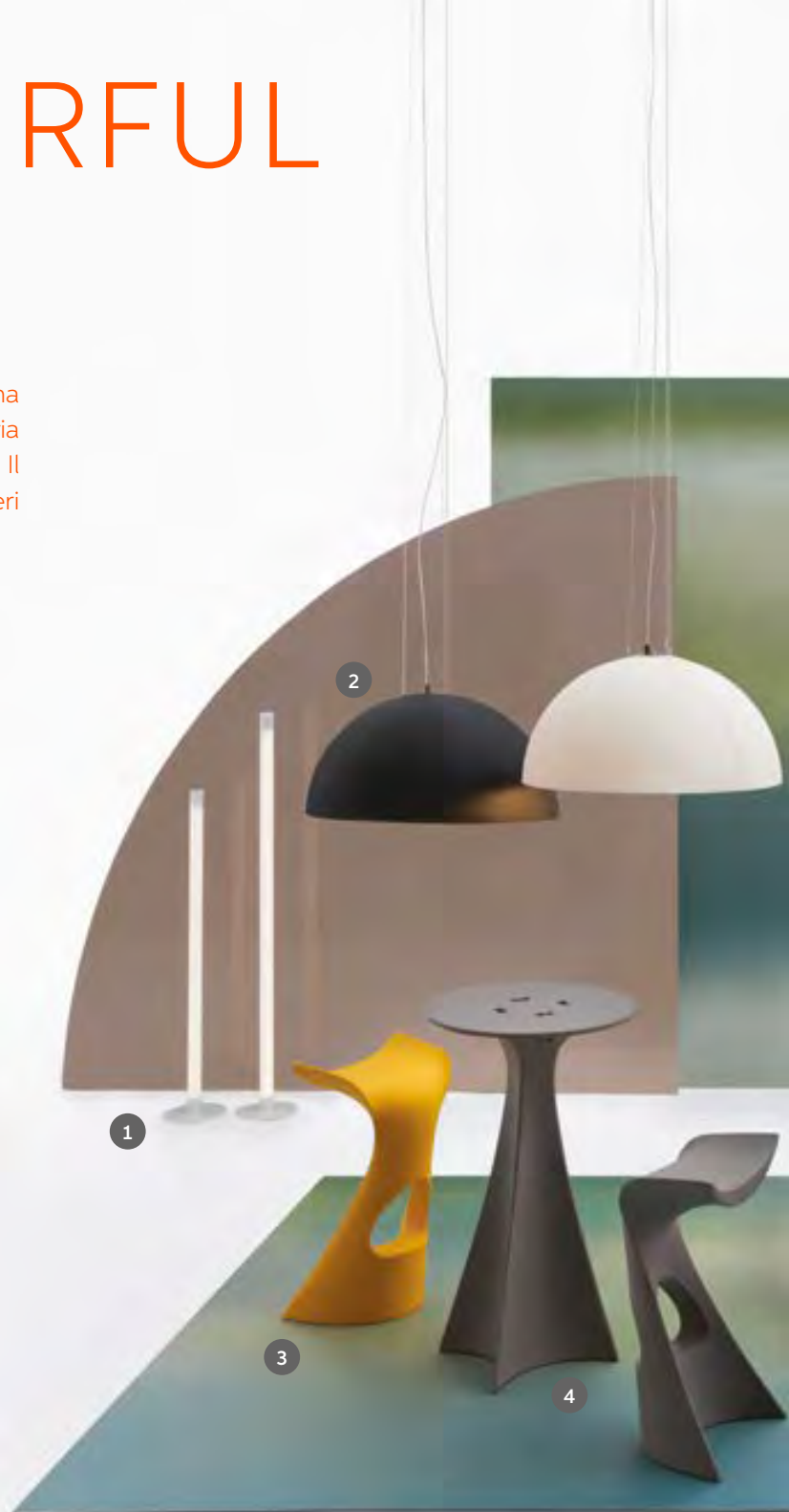


1. **GEAR** sgabello, tavolino | p. 112
2. **DOUBLE U** sgabello | p. 112
3. **ICO** lampada a sospensione | p. 171
4. **SUNDAY** lampada a sospensione | p. 171
5. **JUXT** lampada a sospensione | p. 171
6. **TOY** tavolino | p. 112
7. **MYBOOK** libreria | p. 239
8. **WOW** panchina | p. 232
9. **FLUO** lampada da terra | p. 170



BE COLOURFUL

Per i più estrosi, i designer del panorama internazionale hanno dato libero sfogo alla propria fantasia. In tanti colori accesi o in nuance più naturali, il nostro lato colorato è pronto a stupire anche i caratteri più creativi.



1. **FLUX** lampada da terra | p. 128
2. **CUPOLE** lampada a sospensione | p. 132
3. **KONCORD** sgabello alto | p. 204
4. **JET** tavolo | p. 206
5. **GELEE** pouf morbido | p. 100
6. **MR. GIÒ** servomuto | p. 263
7. **MR. GIÒ SPECCHIO** specchio | p. 263
8. **ELIOS** lampada a sospensione | p. 131
9. **MAG** portariviste | p. 262
10. **THREEBÙ** sgabello, tavolino | p. 36
11. **LOW LITA** poltroncina | p. 64
12. **OTTOCENTO MINI size L** tavolino | p. 46
13. **OTTOCENTO MINI size M** tavolino | p. 46



6

5

7

9

11

8

10

12

13

BE BRIGHT

Piccoli oggetti, grandi protagonisti. Le nostre lampade da tavolo hanno dimensioni ridotte ma una personalità grandiosa, capace di sorprendere. Grazie al loro aspetto non ordinario, sono pronti a diventare i compagni perfetti di ambienti domestici e non solo.



1. **LUNA** lampada da tavolo | p. 136
2. **PRÊT-À-PORTER** lampada da tavolo | p. 169
3. **PUPA** lampada da tavolo | p. 144
4. **LOVE** lampada da tavolo | p. 169
5. **KOKÒ** lampada da tavolo | p. 168
6. **PURE** lampada da tavolo | p. 169
7. **JUMPIE** lampada da tavolo
8. **JUNIOR** lampada da tavolo
9. **GLOBO** lampada da tavolo/da terra | p. 158
10. **OTELLO MINI** lampada da tavolo
11. **CARMEN** lampada da tavolo | p. 168
12. **BUBO** lampada da tavolo | p. 169
13. **CUBO** lampada da tavolo/da terra | p. 156



BE MERRY

La gioia delle feste invernali si sprigiona grazie a oggetti di arredo e complementi in grado di creare la perfetta atmosfera di vetrine, case, ristoranti e hotel. Per gli amanti dell'inverno, ecco le nostre rivisitazioni in chiave pop e contemporanea dei simboli che tutti noi amiamo.



1. **SIRIO** lampada a sospensione
2. **MERRY CUBO** lampada da tavolo/da terra
3. **FIAMMA / FIAMMETTA** lampada da tavolo | p. 169
4. **LIGHTTREE** lampada da tavolo/da terra | p. 170
5. **KOLME** lampada da tavolo | p. 169
6. **KUUSI** lampada da tavolo | p. 169
7. **PANDORO** sgabello

We Make

FURNITURE



AFRIKA COLLECTION

Design
MARCANTONIO

Collection
KROKO
BIG KROKO
THREEBÙ
THREEBÙ POT
THREEBÙ TOTEM



A distant and iconic world becomes contemporary and close to us thanks to the most serious characteristic of all: irony. Marcantonio's unmistakable style signs Afrika collection: the Kroko chairs and the Threebù items.









“Kroko is at the same time an industrial item and a sculpture, with references to Nature and contemporary art, thanks to its hinted but also unmistakable shape”.

Marcantonio









AFRIKA COLLECTION

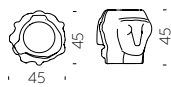
material POLYETHYLENE



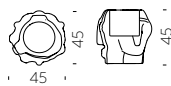
KROKO



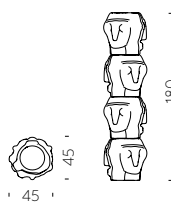
BIG KROKO



THREEBÙ



THREEBÙ POT



THREEBÙ TOTEM



OTTOCENTO COLLECTION

Design
PAOLA NAVONE - OTTO STUDIO

Collection
OTTOCENTO SIZE M
OTTOCENTO SIZE L
OTTOCENTO MINI SIZE M
OTTOCENTO MINI SIZE L



“Inspired by the shapes of Neoclassicism, the purity of the material is linked to the classic nature of the shapes, which remind of the luxury of marble and the elegance of dark colours”.





Ottocento is an indoor and outdoor table available in two polyethylene base sizes, combinable with different shapes and finishes HPL tops. Thanks to a collaboration between the designer and SLIDE production department, every table is a unique piece.



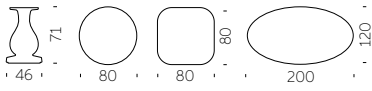




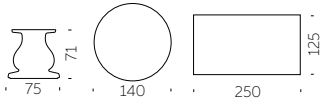


OTTOCENTO COLLECTION

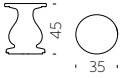
material POLYETHYLENE
HPL TABLETOP



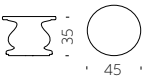
OTTOCENTO SIZE M



OTTOCENTO SIZE L



OTTOCENTO MINI SIZE M



OTTOCENTO MINI SIZE L



RIBS COLLECTION

Design
PAOLA NAVONE - OTTO STUDIO

Collection
RIBS
RIBS UP



Ribs and Ribs up, with their friendly and familiar design, have organic shapes but a strong and contemporary pop soul. Their essential elegance of the structure matches perfectly with the volumes typical of rotational moulding.



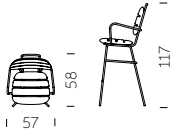


RIBS COLLECTION

material POLYETHYLENE
STEEL CHASSIS



RIBS



RIBS UP



MARA COLLECTION

Design
LORENZA BOZZOLI

Collection
MARA
MARA SOFA
MARA POUF
MARA LOW TABLE



“The woven leather comes to life in all the texture of the Mara collection structure to reproduce also on the plastic material the imperfect and tactile intertwining typical of leather hand manufacturing. The unique texture is combined with the soft cushions in waterproof fabric and suitable for outdoor use”.



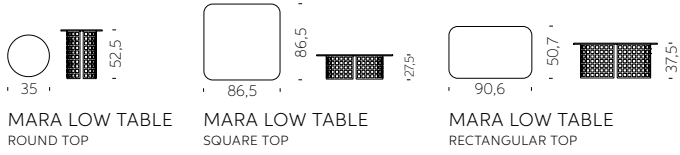
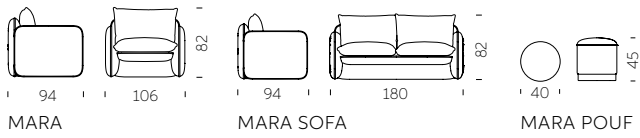






MARA COLLECTION

material POLYETHYLENE, TEXTILE CUSHION (for seats)
ZINC-COATED IRON, HPL TABLETOP (for coffee tables)



LOW LITA COLLECTION

Design
PAOLA NAVONE - OTTO STUDIO

Collection
LOW LITA
LOW LITA LOVE
LOW LITA LOUNGE
LOW LITA TABLE



"This collection is dedicated to the pleasure of relax both outdoor and indoor, it looks informal, fun and nice. Low Lita collection tells stories of different worlds which "mix-up" with joy".





“Low Lita can remind of a seat with an African style of an exotic country. Unexpectedly, it becomes something different but also contemporary, thanks to its material and the technique used to realize it”.

Paola Navone

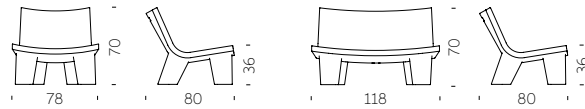






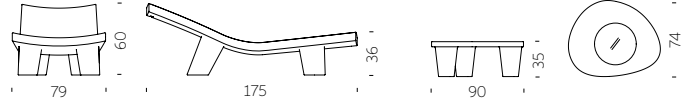
LOW LITA COLLECTION

material POLYETHYLENE
TEXTILE CUSHION



LOW LITA

LOW LITA LOVE



LOW LITA LOUNGE

LOW LITA TABLE







ANNIVERSARY EDITION

We celebrate the iconic Low Lita with a new nuance, born from the perfect match between Paola Navone's incredible creativity and the deep knowledge of Slide in the processing of plastic materials.

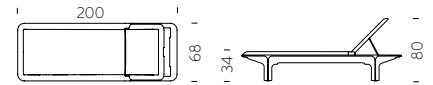
Low Lita Anniversary collection is not a special edition, but it is unique: its black and white nuances are the result of the craftsmanship of rotational moulding; these nuances are not replicable so to personalize each product.



PONENTE

Design
MARTINELLI VENEZIA STUDIO

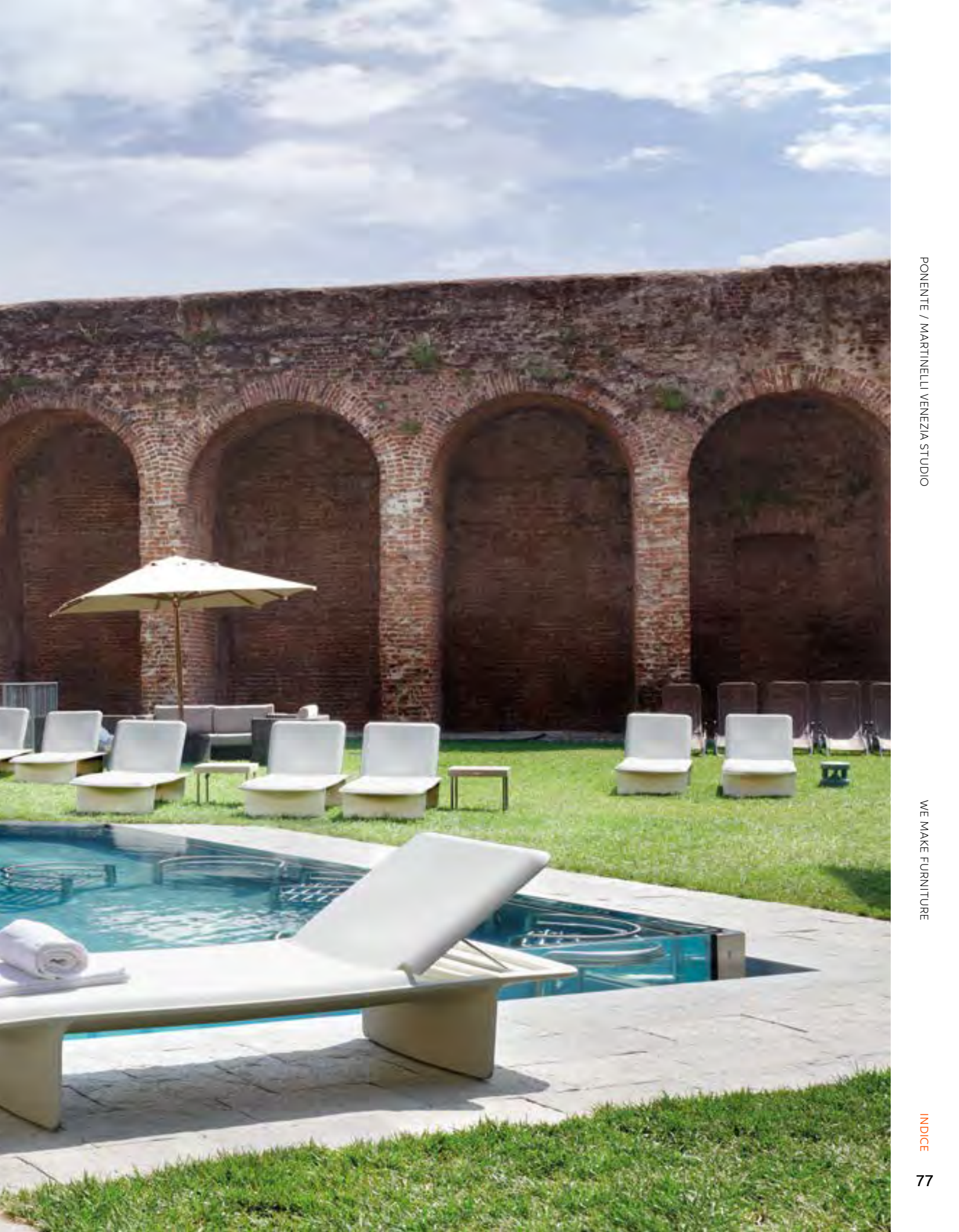
category sun lounger
material polyethylene
textile cushion



The perfect balance between soft shapes, typical of the creations obtained through rotational moulding, and thin thickness, which allows reducing the physical and perceptive weight of a large object. Elegant and cosy, thanks to the adjustable backrest in different inclinations, Ponente can be completed with a comfortable soft fabric cushion for outdoor.







RAP COLLECTION

Design
KARIM RASHID

Collection
RAP CHAIR
RAP

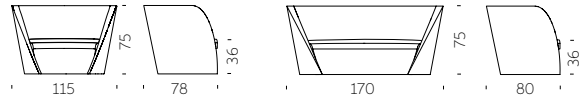


Ideal to create unforgettable indoor or outdoor corners, the Rap collection is a magnet with its minimal but unusual design. The shape of the backrest embraces whoever sits on. The Rap collection gives comfort, relax and a sense of protection that allow you to enjoy a lovely moment.



RAP COLLECTION

material POLYETHYLENE
TEXTILE CUSHION



RAP COLLECTION / KARIM RASHID

WE MAKE FURNITURE





KAMI COLLECTION

Design
MARC SADLER

Collection
KAMI ICHI
KAMI SAN
KAMI YON
KAMI NI



“The name of the collection takes its inspiration from the ancient Japanese art of folding papers. The shapes traced by lines and bisectors characterizes the armchair and the sofa, as well as the seats with the related small table”.

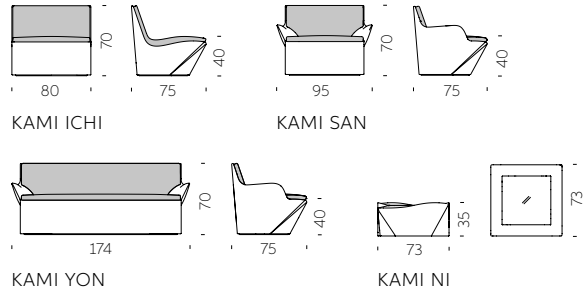






KAMI COLLECTION

material POLYETHYLENE
TEXTILE CUSHION





BLOS COLLECTION

Design
KARIM RASHID

Collection
BLOS
BLOSSY
BLOS LOW TABLE
BLOS POT



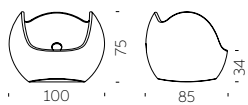
"I always work with the strengths of a client. Slide's strengths lie in their joy for form and mastery of rotomolding. Blos collection comes from that gregarious and expansive personality. The round bulbous forms envelop those sitting and rock gently creating a positive cocooning feeling".



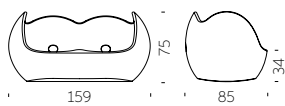


BLOS COLLECTION

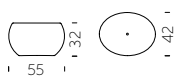
material POLYETHYLENE



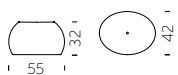
BLOS



BLOSSY



BLOS LOW TABLE



BLOS POT



CHUBBY COLLECTION

Design
MARCEL WANDERS

Collection
CHUBBY
CHUBBY LOW
CHUBBY SIDE TABLE



“Chubby was projected as a plastic reinterpretation of the Crochet Chair, an armchair composed of crocheted fiber which has been hardened with epoxy and designed in a limited edition. The open structure and lightness of the chair provided a nice contrast”.

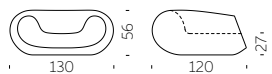




CHUBBY COLLECTION

material POLYETHYLENE

GLASS TABLETOP (for coffee table)



CHUBBY



CHUBBY LOW



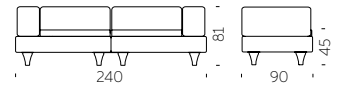
CHUBBY SIDE TABLE



HAPPYLIFE

Design
BEDINI, MARZANO, SETTIMELLI

category sofa
material polyethylene
textile/ecoleather cushion



As a classic nineteenth-century lounge sofa, HappyLife has all the features of comfort and stability. Depending on the needs, it can be a useful flat surface or a comfortable sofa, thanks to the addition of padded cushions available in eco-leather or fabric, both waterproof for outdoor use.







GELÉE COLLECTION

Design
ROBERTO PAOLI

Collection
GELÉE
GELÉE GRAND
GELÉE LOUNGE



“Being inspired by jelly candies I designed Gelée, a soft and nice touch pouf, that converts a familiar product in something else, placed in a different context, made in new dimensions. The result is a comfortable seat which shape and colour immediately stimulates leisure, desire of touching and testing its comfort”.



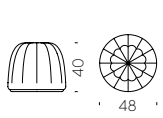




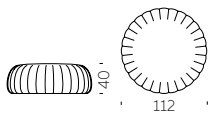


GELÉE COLLECTION

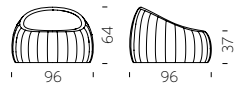
material SOFT POLYURETHANE



GELÉE



GELÉE GRAND



GELÉE LOUNGE



QUEEN OF LOVE

Design
MORO & PIGATTI

category **armchair**
material **polyethylene**



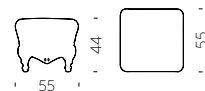
“The Design of Love collection is a box of ideas and emotions that arise from the simplicity of a unique material: the recyclable linear polyethylene. The collection is completely Made in Italy and has brought a touch of freshness and an innovative approach to the design world by re-interpreting the Baroque furniture in a Pop way”.



LITTLE PRINCE OF LOVE

Design
MORO & PIGATTI

category pouf
material polyethylene



LITTLE PRINCE OF LOVE / MORO & PIGATTI

WE MAKE FURNITURE



LITTLE QUEEN OF LOVE

Design
MORO & PIGATTI

Little Queen of Love is the smaller model of the iconic Queen of Love armchair. The Baroque style of its shapes and the pop style of polyethylene make Little Queen of Love a small star in every room it occupies, for both contract and homes.

category **kids armchair**
material **polyethylene**



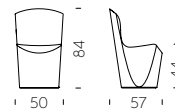
ZOE

ZOE / GUGLIELMO BERCHICCI

WE MAKE FURNITURE

Design
GUGLIELMO BERCHICCI

category chair
material polyethylene

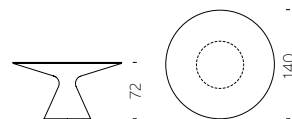


ED

Design
GUGLIELMO BERCHICCI

Ed table is the perfect mix between different shape and material: its conical base is in polyethylene and its round top in tempered glass. Its soul mate is Zoe, a sinuous and elegant chair. Both of them can give a magic touch in their luminous version.

category **table**
material **polyethylene**
tempered glass tabletop



ED / GUGLIELMO BERCHICCI



WE MAKE FURNITURE

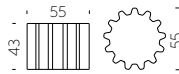
INDICE

FURNITURE YOU MAY ALSO LIKE



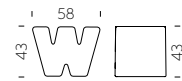
GEAR

design ANASTASIA IVANYUK
category stool/coffee table
material polyethylene



DOUBLE U

design KAZUKO OKAMOTO
category stool
material polyethylene



CUBO POUF

design SLIDE STUDIO
category stool/coffee table
material polyethylene



TOY

design PROSPERO RASULO
category coffee table
material polyethylene





TAO

design GUGLIELMO BERCHICCI
category coffee table
material polyethylene
glass tabletop



SLOTH

design KARIM RASHID
category coffee table
material polyurethane



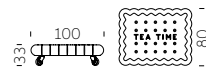
AMORE TABLE

design GIÒ COLONNA ROMANO
category coffee table
material polyethylene
glass tabletop



TEA TIME

design GIANNI ARNAUDO
category coffee table
material polyethylene
nr.4 wheels



TARTA + TARTA LOW TABLE

design ROBERTO PAOLI
category low chair + coffee table
material polyurethane
beech wood legs



TIC TAC

design MARCO ACERBIS
category chaise-longue
material polyethylene



We Make
LIGHTS





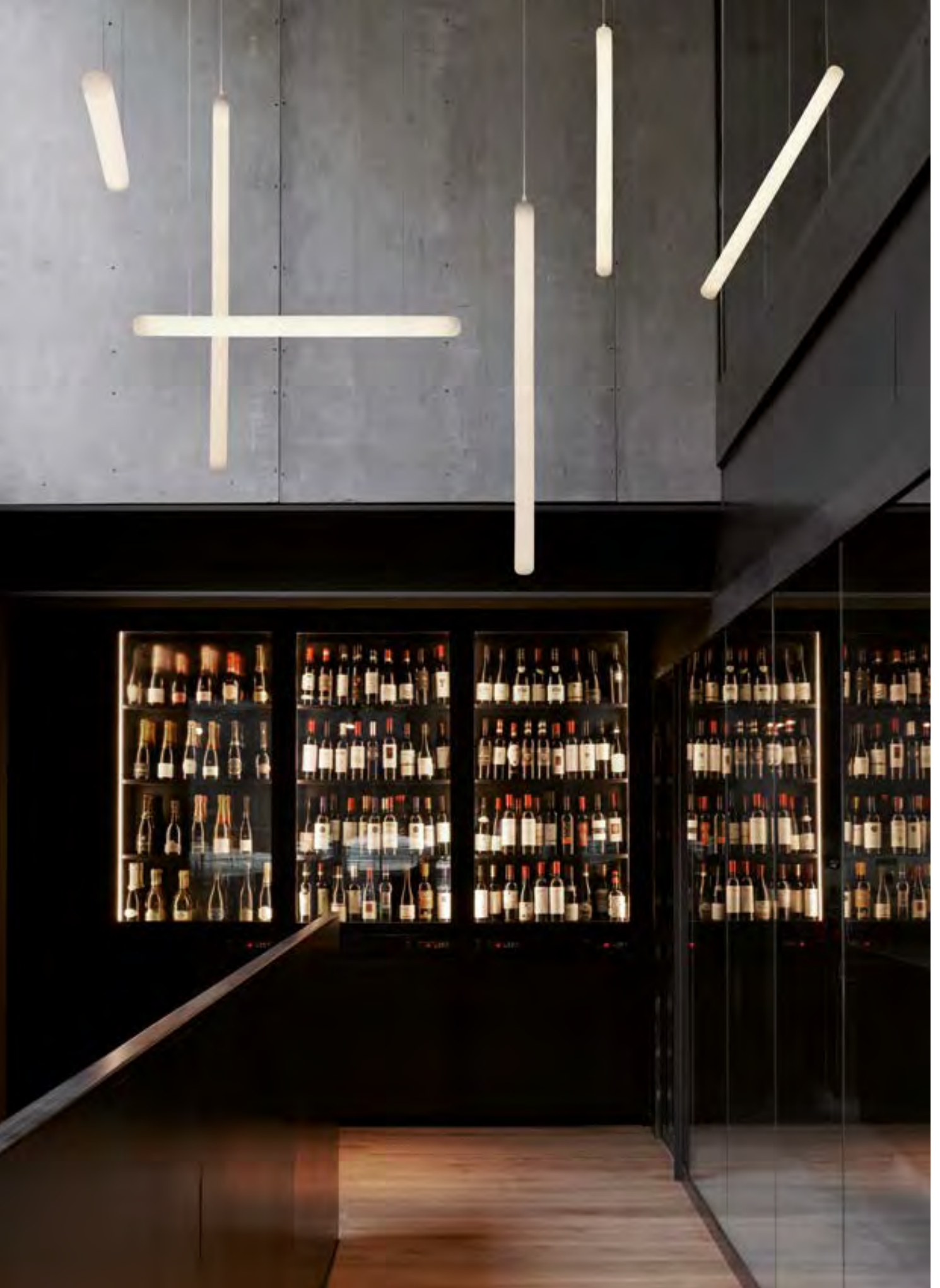
STILETTO COLLECTION

Design
ROBERTO PAOLI



Collection
STILETTO X
STILETTO Y
STILETTO APPLIQUE
STILETTO SHARD

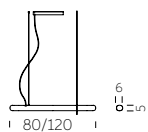
Stiletto is a hanging lamp with an essential line, ideal for contemporary and indoor settings that require a scenographic lighting. Available in two different dimensions, both in vertical and horizontal orientation. Thanks to its minimal design, its homogeneous light and the possibility of infinite combinations.



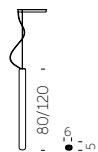


STILETTO COLLECTION

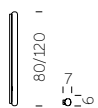
material POLYETHYLENE



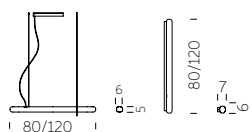
STILETTO X



STILETTO Y



STILETTO APPLIQUE



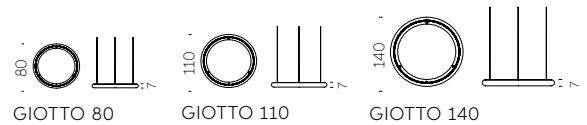
STILETTO SHARD



GIOTTO

Design
ROBERTO PAOLI

category hanging/wall/ceiling lamp
material polyethylene



The perfect circle exists and Roberto Paoli made it in polyethylene. Giotto is a luminous hanging ring with three different LED lighting temperature, so it is perfect for every use: home, hospitality or workspace.





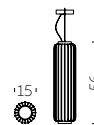
Giotto is a lamp with an essential geometry that can be used individually or in countless compositions. The combination of several Giotto hanging lamps can light up large areas with a strong personality. Available also as wall/ceiling lamp version.



CORDIALE LUMIÈRE

Design
ROBERTO PAOLI

category hanging lamp
material polyethylene
brass covers

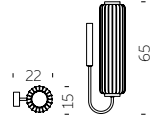


CORDIALE APPLIQUE

Design
ROBERTO PAOLI



category wall lamp
material polyethylene
brass covers



CORDIALE APPLIQUE / ROBERTO PAOLI

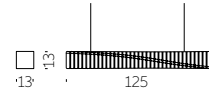
WE MAKE LIGHTS

INDICE

SPIN

Design
FABIO NOVEMBRE

category hanging/wall/ceiling lamp
material polyethylene



“Sometimes a spin is needed to make a pure shape vibrate. Spin hanging/wall lamp comes from the twist of a square-based parallelepiped element. The modularity allows obtaining long and sinuous elements that can vary, in terms of composition, based on the aggregation method”.

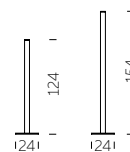


FLUX COLLECTION

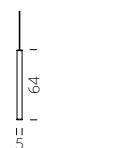
Design
GIÒ COLONNA ROMANO



category floor/hanging lamp
material methacrylate



FLUX



FLUX HANGING



FLUX UP

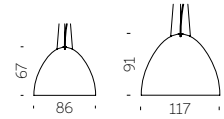
“Silky touch, warm light and an essential design. Flux is a discreet and contemporary lamps family: their essential shape characterizes both the hanging lamp and the floor lamp. The methacrylate creates a silky-effect texture that covers the whole surface”.



PLUME

Design
GIÒ COLONNA ROMANO

category hanging lamp
material fiberglass



PLUME / GIÒ COLONNA ROMANO

WE MAKE LIGHTS



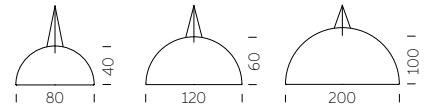
ELIOS

Design
GIÒ COLONNA ROMANO

“Light, essential and thin: Elios and Plume were born from the continuous research of material: the fiberglass process creates a family of hanging lamps that becomes richer thanks to the contrast between the external side of the lamp, in different colours, and the brightness of the inner side”.

Giò Colonna Romano

category **hanging lamp**
material **fiberglass**



ELIOS / GIÒ COLONNA ROMANO



WE MAKE LIGHTS

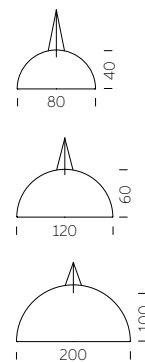
INDICE

CUPOLE

Design
GIÒ COLONNA ROMANO



category **hanging lamp**
material **polyethylene**



Cupole hanging lamp has got an ordinary shape but extraordinary dimensions. Its half-sphere shape is suitable for every indoor settings: Cupole can give a touch of strong personality to every anonymous area. Available in three different dimensions, it gives a playful touch in standard colours, or to be elegant and sophisticated in the two-coloured lacquered version.



DAME OF LOVE

Design
MORO & PIGATTI

category hanging lamp
material polyethylene



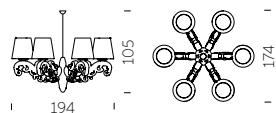
DAME OF LOVE / MORO & PIGATTI

WE MAKE LIGHTS

CROWN OF LOVE

Design
MORO & PIGATTI

category hanging lamp
material polyethylene



CROWN OF LOVE / MORO & PIGATTI

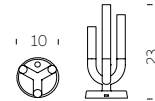
WE MAKE LIGHTS

INDICE

LUNA

Design
ANTONIO LANZILLO & PARTNERS

category table lamp
material plexiglass
metal base



“Luna is a romantic light, full of emotion, that evokes classic scenarios. A warm, poetic lamp with a technological heart: rechargeable, dimmable, soft touch.”

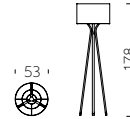


ALLURE

ALLURE / ILARIA MARELLI

Design
ILARIA MARELLI

category floor lamp
material polyester
galvanized metal base

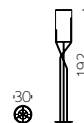


WE MAKE LIGHTS

AURA

Design
ILARIA MARELLI

category floor lamp
material polyester
galvanized metal base



AURA / ILARIA MARELLI

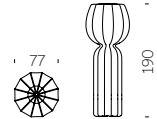
WE MAKE LIGHTS

INDICE

CUCUN

Design
LORENZA BOZZOLI

category floor lamp
material polyethylene



Inspired by the simple shapes of flowers, vegetables and bulbs, Cucun floor lamp merges perfectly with the Nature around it. Thanks to its strong decorative presence, it is ideal to furnish both domestic and commercial areas, both for indoor and outdoor spaces.



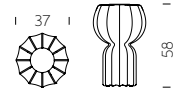




PUPA

Design
LORENZA BOZZOLI

category **table lamp**
material **polyethylene**



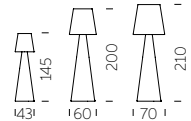
A sheet of ancient Japanese paper inspiration, which covers the whole surface, creates soft light effects. The particular structure, with its ribs, is a tribute to some icons of Italian design of the last century. Pupa table lamp is perfect for warm and refined atmospheres and contemporary indoor settings.



PIVOT

Design
SLIDE STUDIO

category floor lamp
material polyethylene



The linear design of Pivot collection is the result of the perfect mix between the conical shape of the base and the classic shape of the lampshade. The main characteristic of Pivot is the texture on its lampshade, which reminds of the classical arabesque motif: available in three different dimensions.

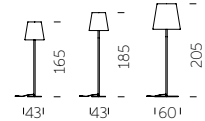


ALI BABA STEEL

Design
SLIDE STUDIO

ALI BABA STEEL / SLIDE STUDIO

category floor lamp
material polyethylene
galvanized metal base

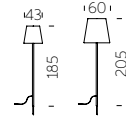


WE MAKE LIGHTS

FIACCOLA ALI BABA

Design
SLIDE STUDIO

category floor lamp
material polyethylene
galvanized metal base



FIACCOLA ALI BABA / SLIDE STUDIO

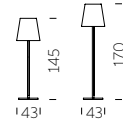
WE MAKE LIGHTS

INDICE

ALI BABA WOOD

Design
SLIDE STUDIO

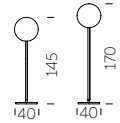
category floor lamp
material polyethylene
wood beech base



GLOBO WOOD

Design
SLIDE STUDIO

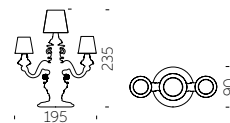
category floor lamp
material polyethylene
wood beech base



KING OF LOVE

Design
MORO & PIGATTI

category floor lamp
material polyethylene

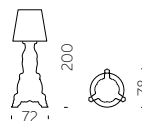


MADAME OF LOVE

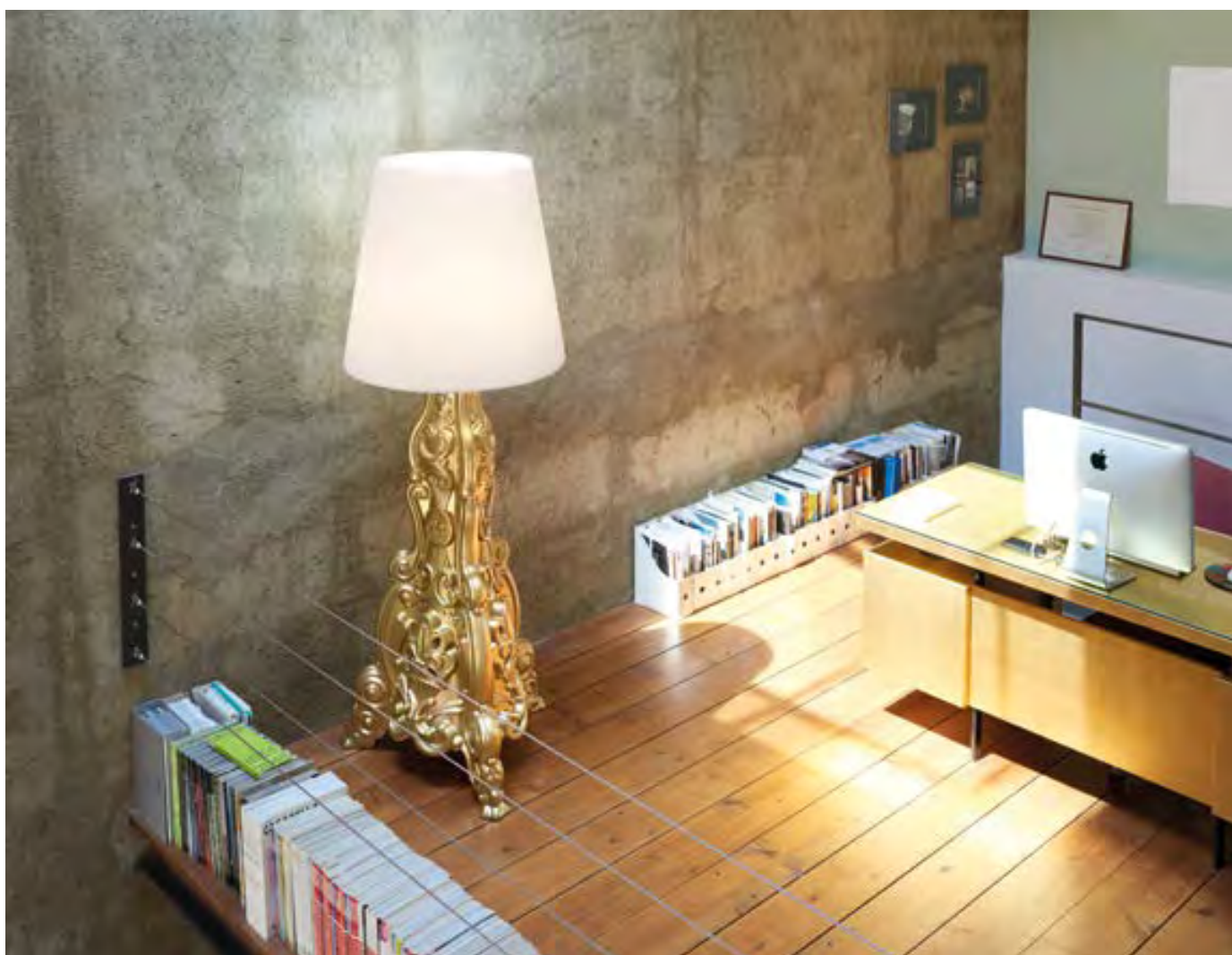
Design
MORO & PIGATTI

An Italian baroque classic, the abat-jour, is reinterpreted in pop and ironic style: Madame of Love is a floor lamp that reminds the same shape of the abat-jour, but it is bigger than the classic lamp and it has got a contemporary base made in polyethylene.

category **floor lamp**
material **polyethylene**



MADAME OF LOVE / MORO & PIGATTI



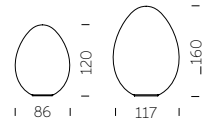
WE MAKE LIGHTS

INDICE

DINO

Design
SLIDE STUDIO

category floor lamp
material polyethylene

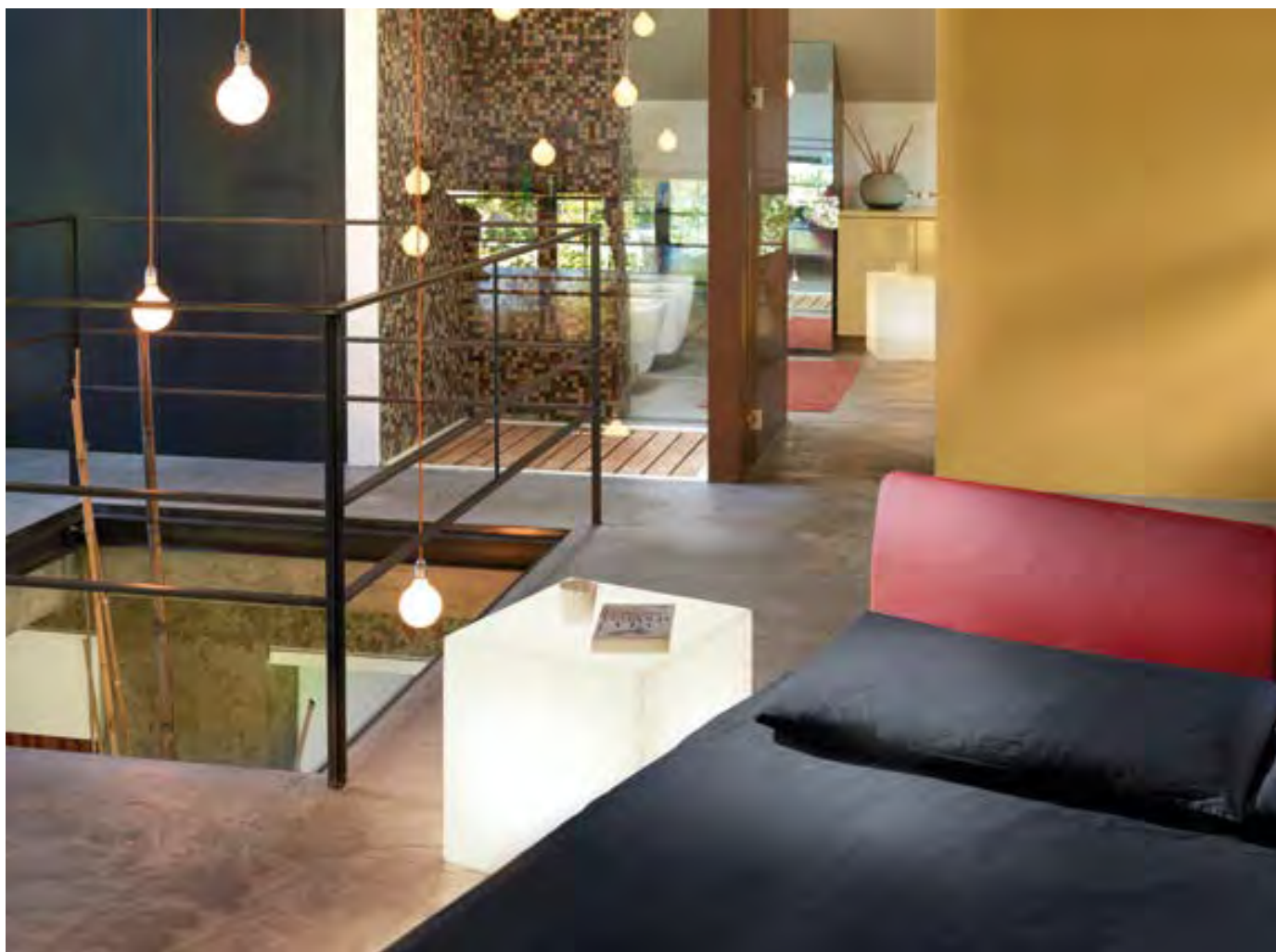
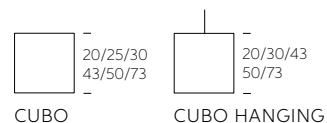




CUBO COLLECTION

Design
SLIDE STUDIO

category **table/floor/hanging lamp**
material **polyethylene**



The sweet and sensual light of Cubo collection is able to create a lounge and elegant setting in every indoor and outdoor contract project, so Cubo becomes one of the Slide bestsellers.



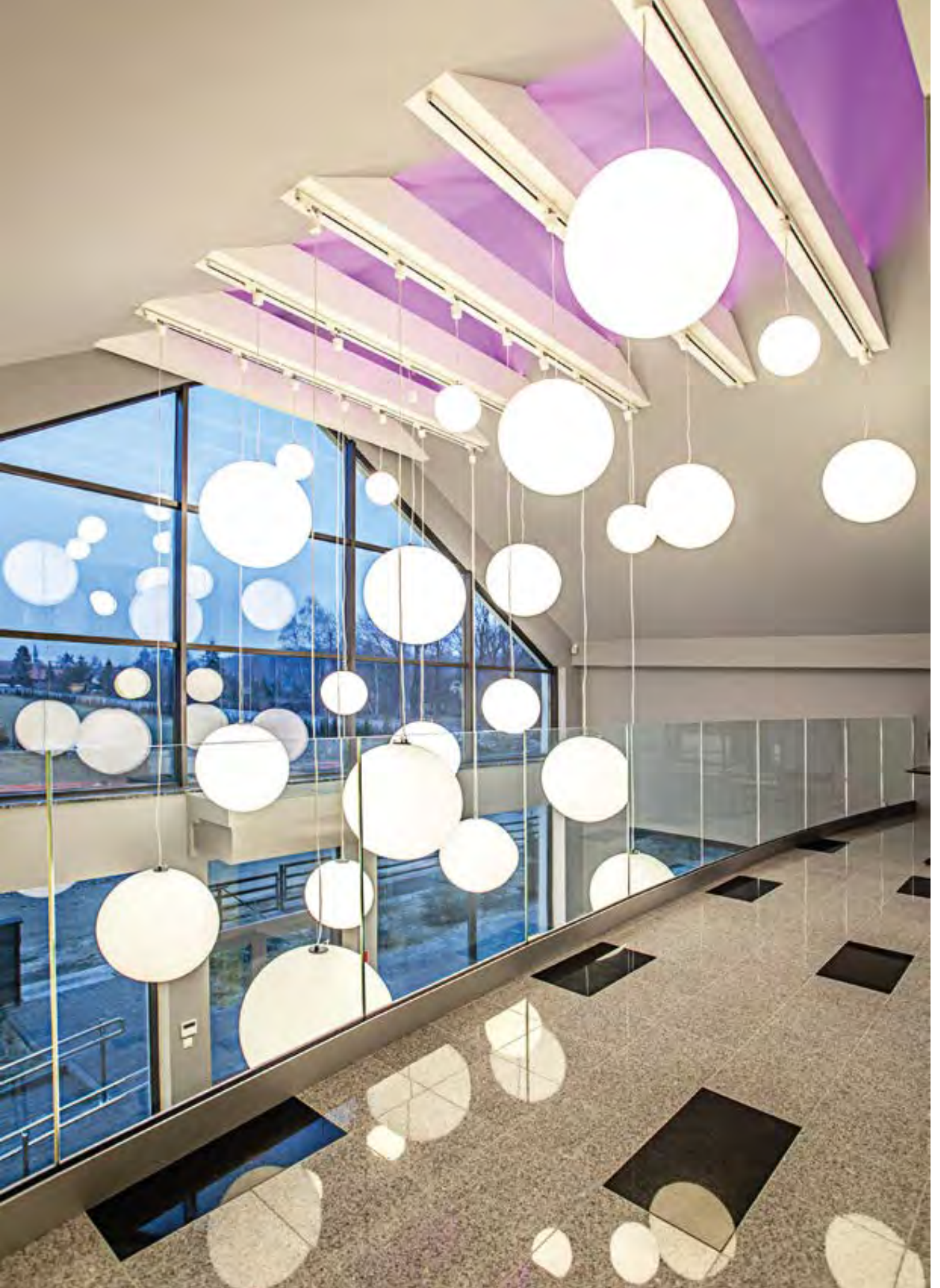
GLOBO COLLECTION

Design
SLIDE STUDIO

Collection
GLOBO
GLOBO HANGING
GLOBO TIGE
ACQUAGLOBO



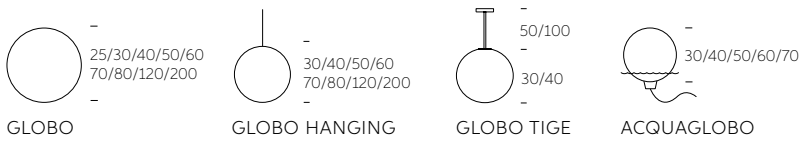
The simplicity of a luminous sphere that can create amazing and elegant atmospheres in indoor and outdoor settings. Globo collection is a numerous family: it is available in different dimensions from 25cm up to 2mt diameter, and in different version as table, floor, wall/ceiling, hanging and floating lamps.





GLOBO COLLECTION

material POLYETHYLENE



MINERAL COLLECTION

Design
SLIDE STUDIO

Collection
MINERAL
MINERAL STAND
MINERAL HANGING
MINERAL TIGE



The luxurious marble finishes, with grey and red veinings, characterize the Mineral collection. The marbled texture made the light delicate and welcoming in table, floor and hanging versions. For classy indoor spaces, simple but at the same time unforgettable.





MINERAL COLLECTION

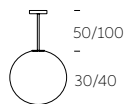
material POLYETHYLENE



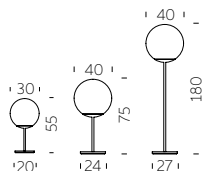
MINERAL



MINERAL HANGING



MINERAL TIGE



MINERAL STAND



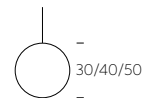
MURANO COLLECTION

Design
SLIDE STUDIO

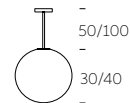
category table/hanging/ceiling lamp
material SAN



MURANO



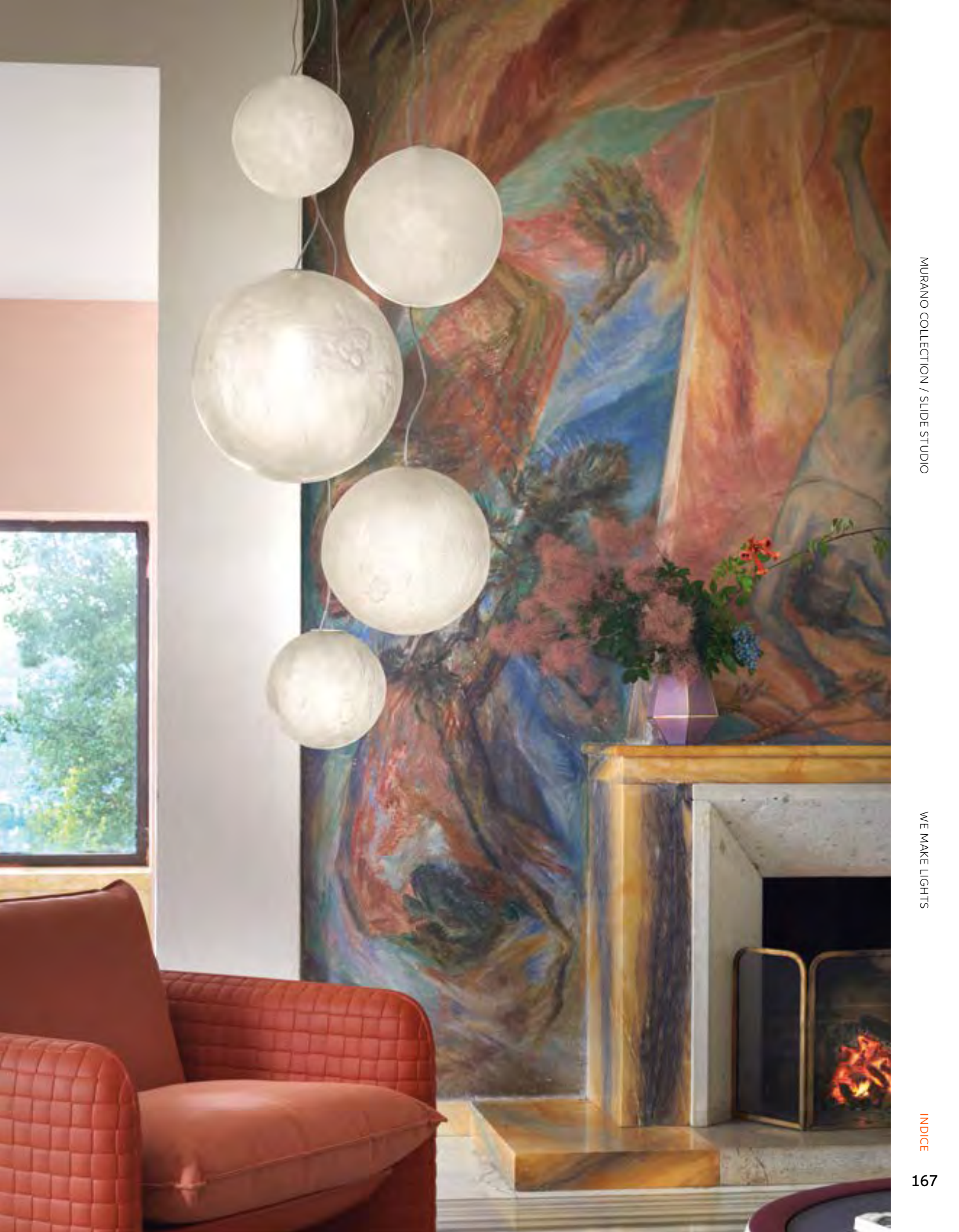
MURANO HANGING



MURANO TIGE



From the ancient tradition of master glassmakers, Murano is a hanging lamp that, best of all, matches industrial series production with the wonderful imperfections of craftsmanship. With a special blend of plastic material, Murano has the iridescence of glass and each piece is unique, thanks to manual finishing. Warm light radiates uniformly thanks to the transparency of the material.



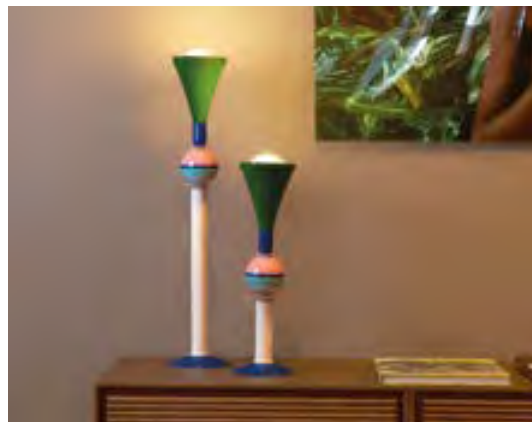
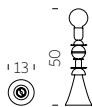
LIGHTS

YOU MAY ALSO LIKE



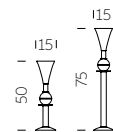
OTELLO

design GIÒ COLONNA ROMANO
category **table lamp**
material **aluminium**



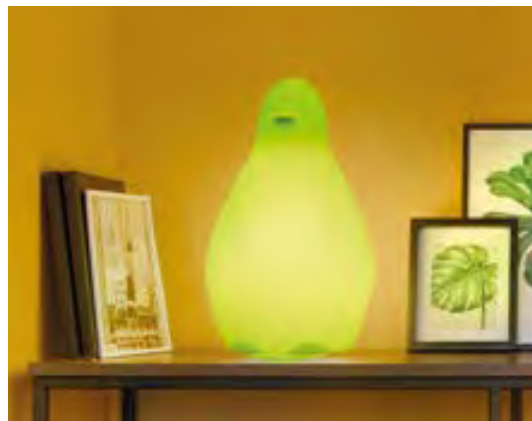
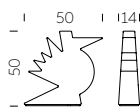
CARMEN

design GIÒ COLONNA ROMANO
category **table lamp**
material **aluminium**



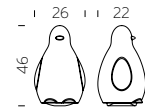
HERE

design ALESSANDRO MENDINI
category **table lamp**
material **polyethylene**



KOKÒ

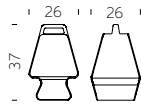
design GIÒ COLONNA ROMANO
category **table lamp**
material **polyethylene**





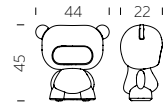
PRÊT-À-PORTER

design ANTONIO NORERO
category table lamp
material polyethylene



PURE

design LAB81
category table lamp
material polyethylene



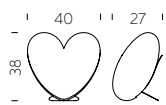
BUBO

design FABIO ROTELLA
category table lamp
material polyethylene



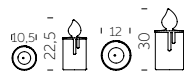
LOVE

design STEFANO GIOVANNONI
category table lamp
material polyethylene
metal base



FIAMMETTA + FIAMMA

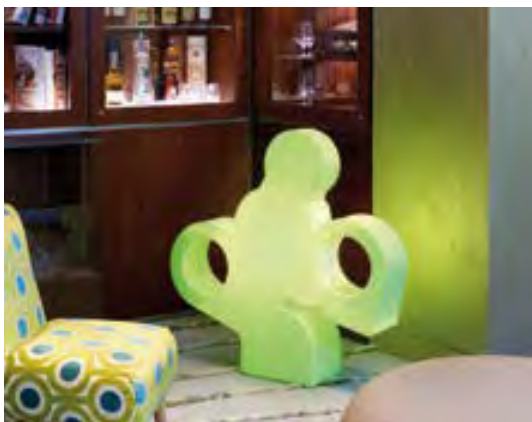
design ALBERTO GHIRARDELLO
category table lamp
material polyethylene



KOLME + KUUSI

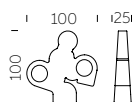
design ROBERTO PAOLI
category table/floor lamp
material polyethylene





THERE

design **ALESSANDRO MENDINI**
category **floor lamp**
material **polyethylene**



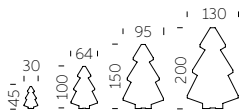
BIJOUX

design **BÜRO FÜR FORM**
category **floor/hanging lamp**
material **polyethylene**



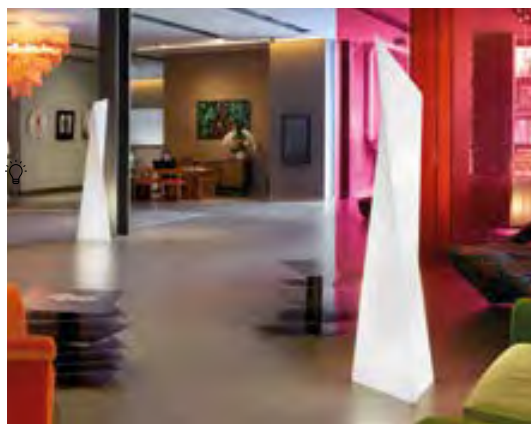
LIGHTTREE

design **LOETIZIA CENSI**
category **table/floor lamp**
material **polyethylene**



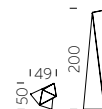
FLUO

design **SLIDE STUDIO**
category **floor lamp**
material **polyethylene**



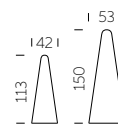
MANHATTAN

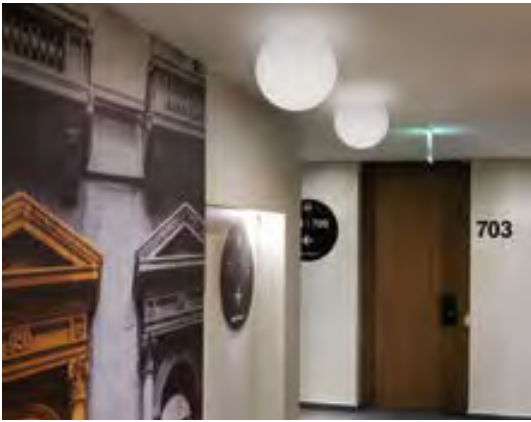
design **GIÒ COLONNA ROMANO**
category **floor lamp**
material **polyethylene**



CONO

design **SLIDE STUDIO**
category **floor lamp**
material **polyethylene**





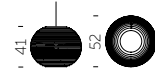
GLOBO WALL

design SLIDE STUDIO
category wall/ceiling lamp
material polyethylene



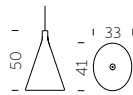
MOLLY

design SLIDE STUDIO
category hanging lamp
material polyethylene



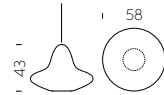
JUXT

design KARIM RASHID
category hanging lamp
material polyethylene



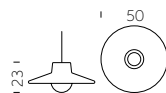
SUNDAY

design SLIDE STUDIO
category hanging lamp
material polyethylene



ICO

design STUDIOPANG
category hanging lamp
material polyethylene



MESH

design BBMDS
category hanging lamp
material polyethylene



We Make
HOSPITALITY





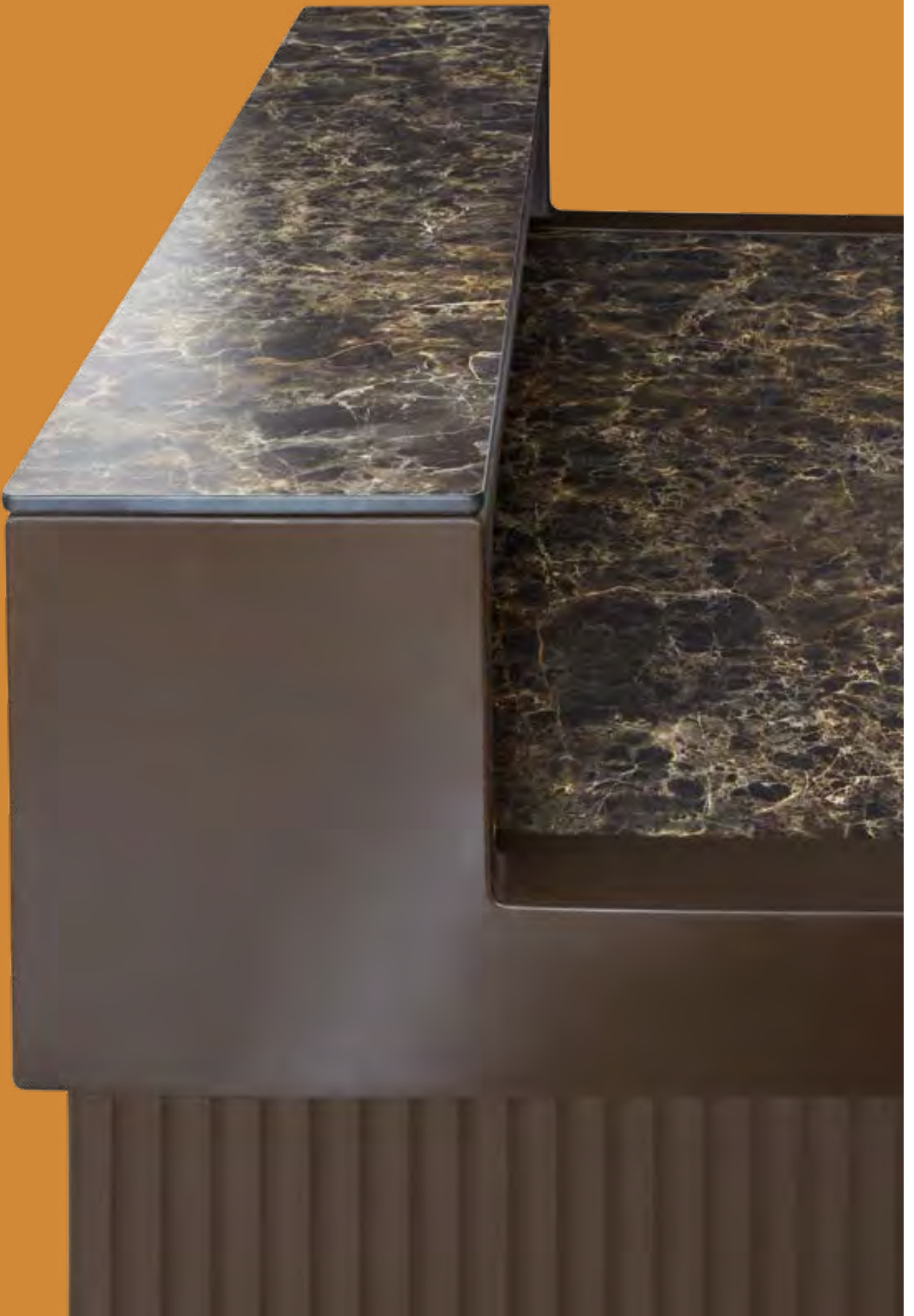
CORDIALE COLLECTION

Design
ROBERTO PAOLI

Collection
CORDIALE
CORDIALE CORNER
CORDIALE WELCOME



“The function becomes the first step for the creation of the shape in the Cordiale bar counter. Cordiale can give a sweetly retro style to a contemporary space. The geometries that make up the project, as well as the surface finishes, lead back to materials such as stone or hand-made wood essences”.

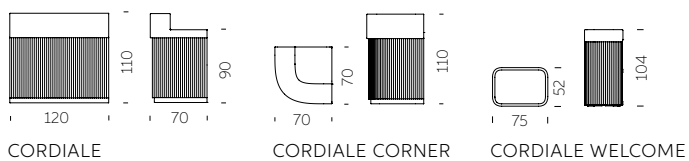






CORDIALE COLLECTION

material POLYETHYLENE





BREAK COLLECTION

Design
SLIDE STUDIO

Collection
BREAK BAR
BREAK LINE
BREAK CORNER
ICE BAR



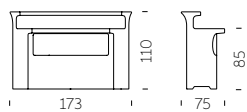
The magic of the light and the simplicity of polyethylene: the Break collection is the perfect combination for events, restaurants and lounge bars. The luminous bar counters light up big areas and create magical and unforgettable moments for all the guests.



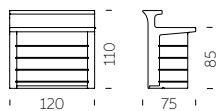


BREAK COLLECTION

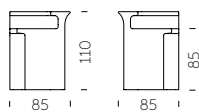
material POLYETHYLENE



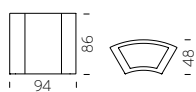
BREAK BAR



BREAK LINE



BREAK CORNER



ICE BAR

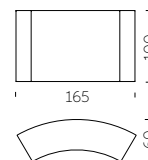


SNACK BAR

SNACK BAR / SLIDE STUDIO

Design
SLIDE STUDIO

category **bar counter**
material **polyethylene**



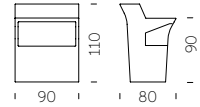
WE MAKE HOSPITALITY

JUMBO COLLECTION

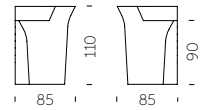
Design
JORGE NAJERA

The first real success of Slide, Jumbo Bar is the ancestor of the whole production of luminous bar counters. Jumbo Bar and Jumbo Corner are suitable to create unique events, both in indoor and outdoor spaces.

category **bar counter**
material **polyethylene**



JUMBO BAR



JUMBO CORNER

JUMBO COLLECTION / JORGE NAJERA



WE MAKE HOSPITALITY

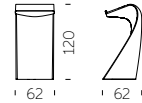
INDICE

SWISH

SWISH / KARIM RASHID

Design
KARIM RASHID

category lectern
material polyethylene



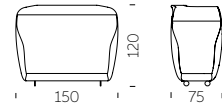
WE MAKE HOSPITALITY

ROLLER BAR

Design
GERD VAN CAUTEREN



category **bar counter**
material **polyethylene**



ROLLER BAR / GERD VAN CAUTEREN

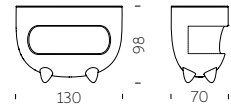
WE MAKE HOSPITALITY

INDICE

SPLAY

Design
KARIM RASHID

category **bar counter**
material **polyethylene**

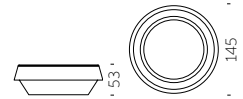




GIÒ POUF

Design
SLIDE STUDIO

category pouf
material polyethylene
ecoleather cushion



GIÒ POUF / SLIDE STUDIO

WE MAKE HOSPITALITY

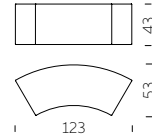


SNAKE

Design
SLIDE STUDIO

The perfect match between aesthetic and functionality: Snake designs and organizes the spaces with elegance and essentiality. Luminous and modular, Snake creates dreamy atmosphere during special events or in contemporary contract projects.

category **modular seat**
material **polyethylene**



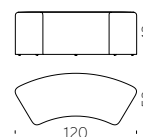
SOFT SNAKE

SOFT SNAKE / SLIDE STUDIO

Soft Snake and Soft Cubo are an even more comfortable reinterpretation of Slide bestsellers Snake and Cubo. Made in soft polyurethane, they can perfectly match with their luminous version in polyethylene, in both indoor and outdoor settings.

Design
SLIDE STUDIO

category **soft modular seat**
material **soft polyurethane**



WE MAKE HOSPITALITY

SOFT CUBO

Design
SLIDE STUDIO

category **soft stool**
material **soft polyurethane**







PINT

PINT / SLIDE STUDIO

Pint is an extremely elegant and linear luminous high table. The conical shape of Pint matches perfectly with the round tempered glass top, which gives a more sophisticated look to events and contract.

Design
SLIDE STUDIO

category **table**
material **polyethylene**
tempered glass tabletop



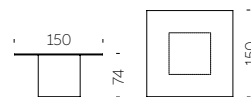
WE MAKE HOSPITALITY



SQUARE

Design
SLIDE STUDIO

category **table**
material **polyethylene**
tempered glass tabletop



SQUARE / SLIDE STUDIO

WE MAKE HOSPITALITY

INDICE



GLORIA

GLORIA / MARC SADLER

WE MAKE HOSPITALITY

Design
MARC SADLER

category chair
material polypropylene
steel chassis



GLORIA MEETING

Design
MARC SADLER



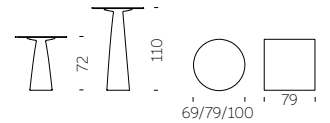
category chair
material polypropylene
steel chassis



HOPLÀ

Design
MARC SADLER

category **table**
material **polyethylene**
hpl tabletop



Informal and refined at the same time, Hoplà is a family of stylish tables designed by Marc Sadler. Everyone can create their own perfect Hoplà table: you can choose from various heights and different shapes of HPL tops.



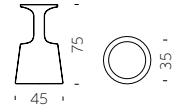
DRINK

DRINK / JORGE NAJERA

WE MAKE HOSPITALITY

Design
JORGE NAJERA

category **high stool**
material **polyethylene**

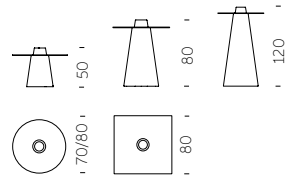


PEAK

Design
AKSU & SUARDI STUDIO

The main reason for the success of Peak is its eccentric design: the simple and conical base shape ends with a hole that can become a bottle rack or a romantic flowerpot. The fancy base of Peak is available in different heights.

category **table**
material **polyethylene**
tempered glass tabletop



PEAK / AKSU & SUARDI STUDIO



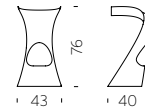
WE MAKE HOSPITALITY

INDICE

KONCORD

Design
KARIM RASHID

category **high stool**
material **polyethylene**



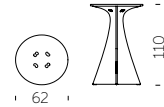
"I love plastic. I always have and always will. Plastic has afforded a warm, soft, malleable, flexible, comfortable, lightweight democratic landscape reaped with innovation. And with that I made Konkord, an entirely unique shape that is only made possible by plastic. The resulting form of movement speaks about our dynamic digital age".



JET

Design
KARIM RASHID

category **table**
material **polyethylene**



Thanks to the 10th anniversary of the iconic Konkord stool designed by Karim Rashid, Slide creates the perfect partner for it, the Jet high table. Its sinuous shape enhances the silhouette of the stool and merges with it. The top is decorated with symbols that the designer adores.



AMÉLIE COLLECTION

Design
ITALO PERTICHINI

Collection
AMÉLIE
AMÉLIE DUETTO
AMÉLIE PANCHETTA
AMÉLIE SGABELLO
AMÉLIE SIT UP
AMÉLIE UP



“The project idea derives from the careful observation of what is around us. Modify the existing in order to adapt it to new needs. The conical shape means stability and stackability par excellence. The unnecessary was removed, so Amélie was born: solid, stable, stackable”.







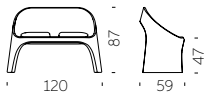


AMÉLIE COLLECTION

material POLYETHYLENE



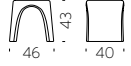
AMÉLIE



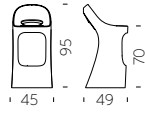
AMÉLIE DUETTO



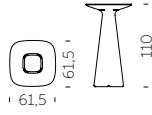
AMÉLIE PANCHETTA



AMÉLIE SGABELLO



AMÉLIE SIT UP



AMÉLIE UP

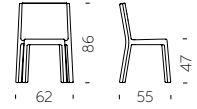


Q4

Q4 / JORGE NAJERA

Design
JORGE NAJERA

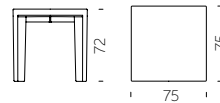
category chair
material polyethylene



WE MAKE HOSPITALITY

Design
GIÒ COLONNA ROMANO

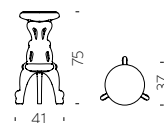
category table
material polyethylene
tempered glass tabletop



MISTER OF LOVE

Design
MORO & PIGATTI

category high stool
material polyethylene



MISTER OF LOVE / MORO & PIGATTI

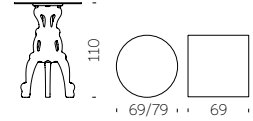
WE MAKE HOSPITALITY

MASTER OF LOVE

Design
MORO & PIGATTI



category table
material polyethylene
hpl tabletop



MASTER OF LOVE / MORO & PIGATTI

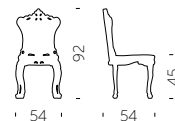
WE MAKE HOSPITALITY

INDICE

PRINCESS OF LOVE

Design
MORO & PIGATTI

category chair
material polyethylene



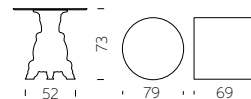
PRINCESS OF LOVE / MORO & PIGATTI

WE MAKE HOSPITALITY

LORD OF LOVE

Design
MORO & PIGATTI

category table
material polyethylene
hpl tabletop



SIR OF LOVE

Design
MORO & PIGATTI

category table
material polyethylene
glass/hpl tabletop



With its royal and majestic presence, Sir of Love table turns every evening into a real black-tie event. Its four arched legs are rich in details, as the typical Italian baroque style, but it is made in polyethylene, a contemporary and pop material.



HOSPITALITY

YOU MAY ALSO LIKE



SUMMERTIME

design GIÒ COLONNA ROMANO
category pouf
material polyethylene



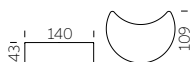
BOT ONE

design FABIO DELLA FIORENTINA
category pouf
material polyethylene



MOON

design ALAIN HADIFE
category pouf
material polyethylene



YPSILON

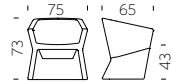
design SLIDE STUDIO
category modular seat
material polyethylene





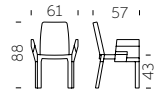
EXOFA

design **JORGE NAJERA**
category **armchair**
material **polyethylene**



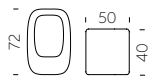
DOUBLIX

design **STIRUM DESIGN**
category **chair**
material **polyethylene**



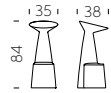
LAZY BONES

design **BARNABY GUNNING**
category **high stool**
material **polyethylene**



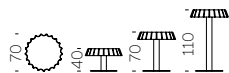
VOILÀ

design **MARC SADLER**
category **high stool**
material **polyethylene**



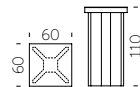
FIZZ

design **GIANNI ARNAUDO**
category **table**
material **polyethylene**
galvanized metal base



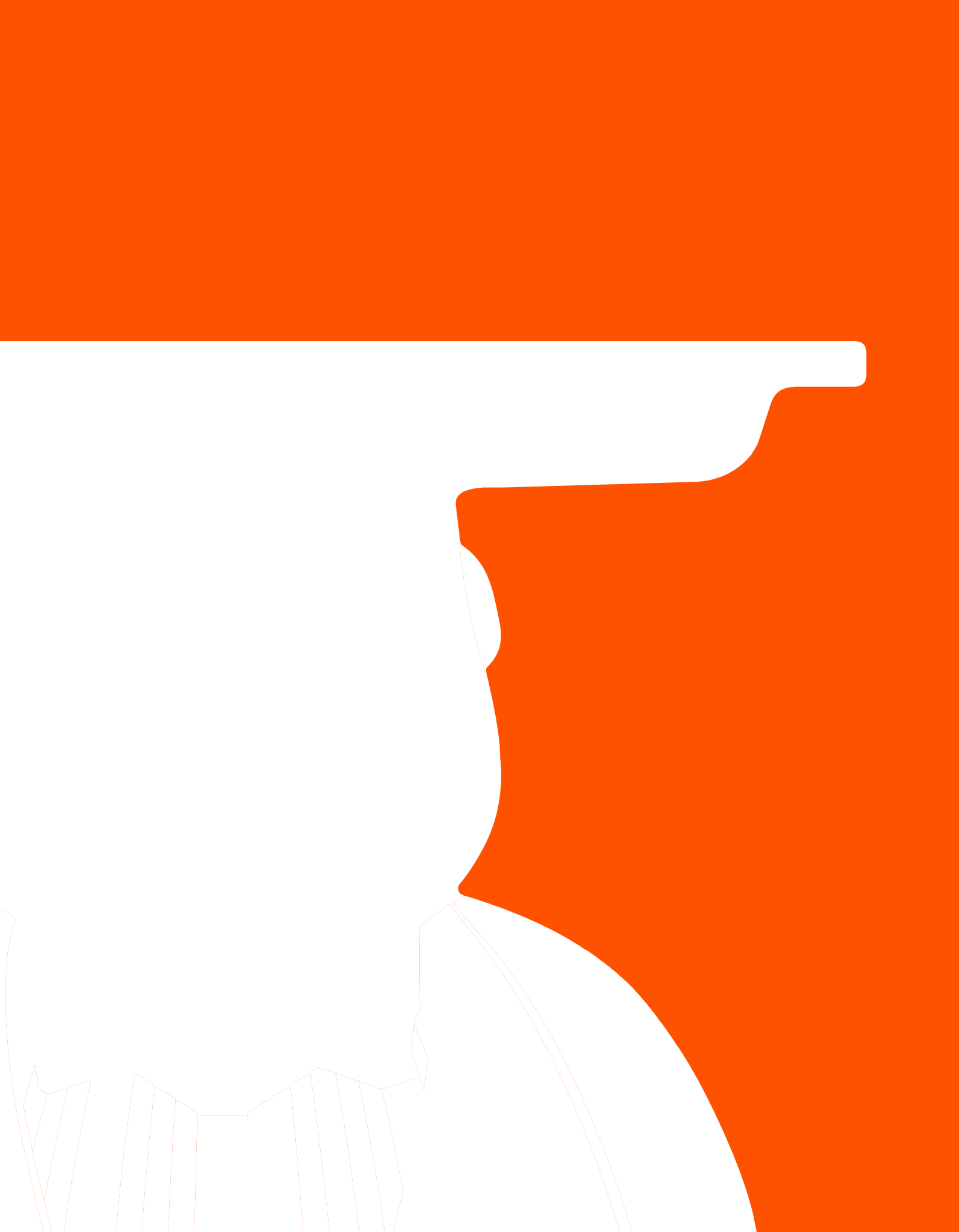
X2

design **SLIDE STUDIO**
category **table**
material **polyethylene**



We Make
COMPLEMENTS

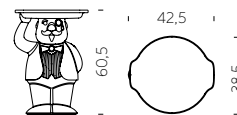




AMBROGIO

Design
FAVARETTO&PARTNERS

category **servant table**
material **polyethylene**
wood removable tray



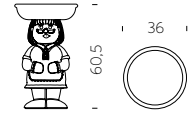
“Ambrogio and Amanda, with a wink to green side, are nice and attractive items, but at the same time they are eco-friendly. Thanks to Ambrogio and Amanda, Design becomes democratic, ethic and ideal to improve our planet.”



AMANDA

Design
FAVARETTO&PARTNERS

category servant table
material polyethylene
wood removable tray





AMORE

Design
GIÒ COLONNA ROMANO

category **bench**
material **polyethylene**



“Amore bench represents the synthesis of the main characteristics of SLIDE production. Love (“amore” in Italian) for the colour, love for the original design, love for the unusual shapes. This bench is a sculpture and a positive hymn to love, which should be present in all its shapes inside every home”.

WOW

Design
KAZUKO OKAMOTO

category **bench**
material **polyethylene**



The calligraphic and palindromic WOW creates amazement and happiness in every kind of settings. This pop seat pays a tribute to the comics culture in Japan, where Kazuko Okamoto was born.

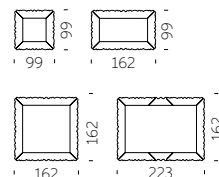


FRAME OF LOVE

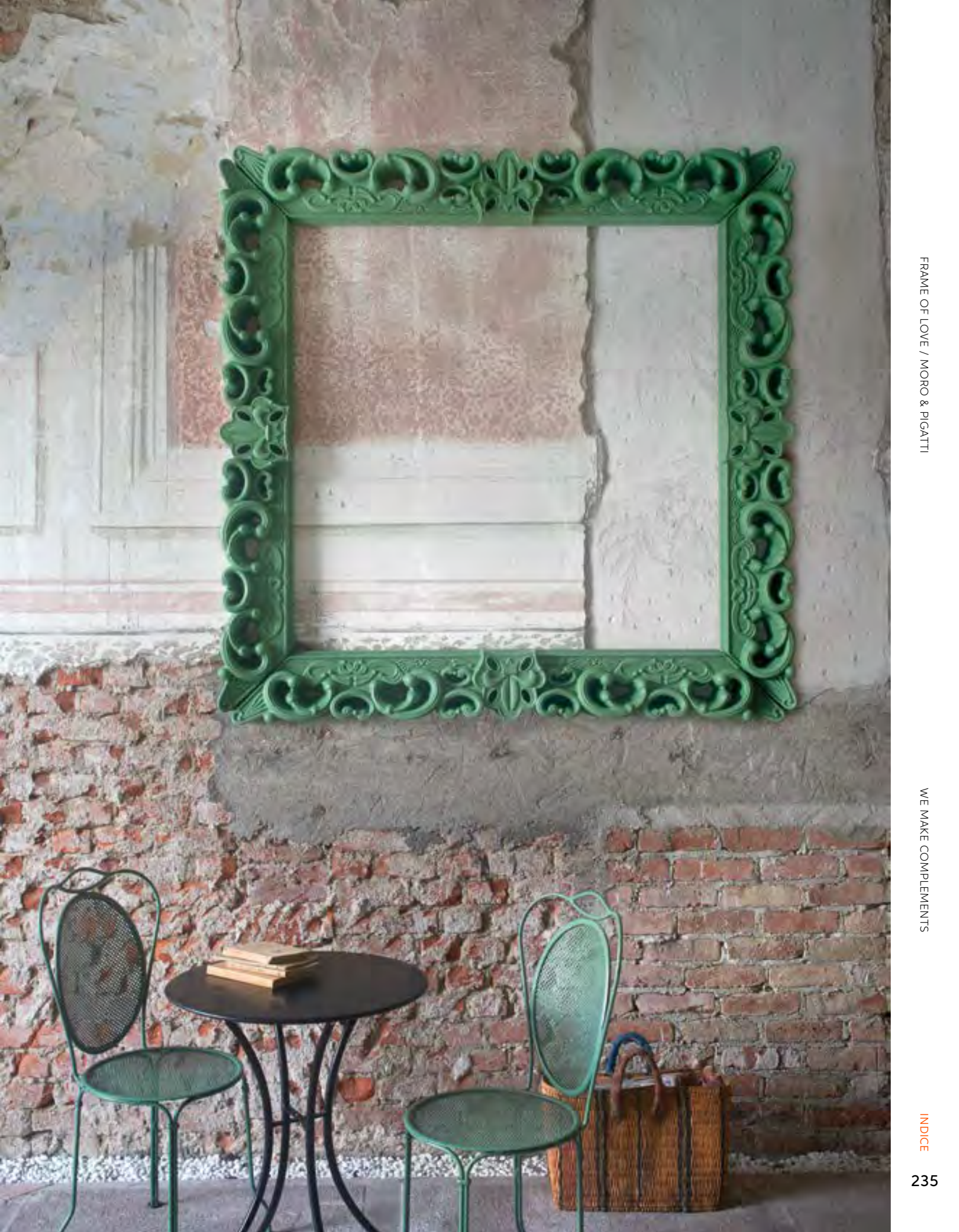
Design
MORO & PIGATTI



category **frame**
material **polyethylene**



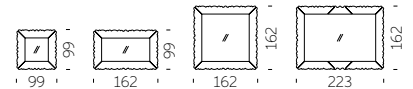
Vintage and sophisticated, Frame of Love is ideal in every kind of settings, both indoor and outdoor, both for domestic rooms or contract world. Thanks to its different dimensions, it is possible to create different compositions with frames in different colours or dimensions.



MIRROR OF LOVE

Design
MORO & PIGATTI

category **mirror**
material **polyethylene**
mirror



Mirror of Love is the perfect design object to irreverent and contemporary princesses and princes. Mirror of Love is available in four different dimensions, with the same strong personality.



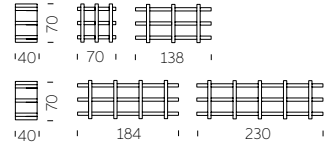
BOOKY

BOOKY / GIÒ COLONNA ROMANO

WE MAKE COMPLEMENTS

Design
GIÒ COLONNA ROMANO

category **bookcase**
material **polyethylene**

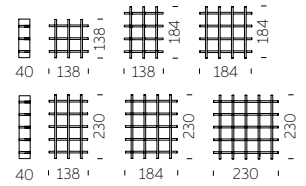


MYBOOK

Design
GIÒ COLONNA ROMANO



category **bookcase**
material **polyethylene**



MYBOOK / GIÒ COLONNA ROMANO

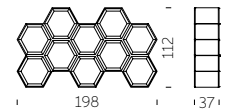
WE MAKE COMPLEMENTS

INDICE

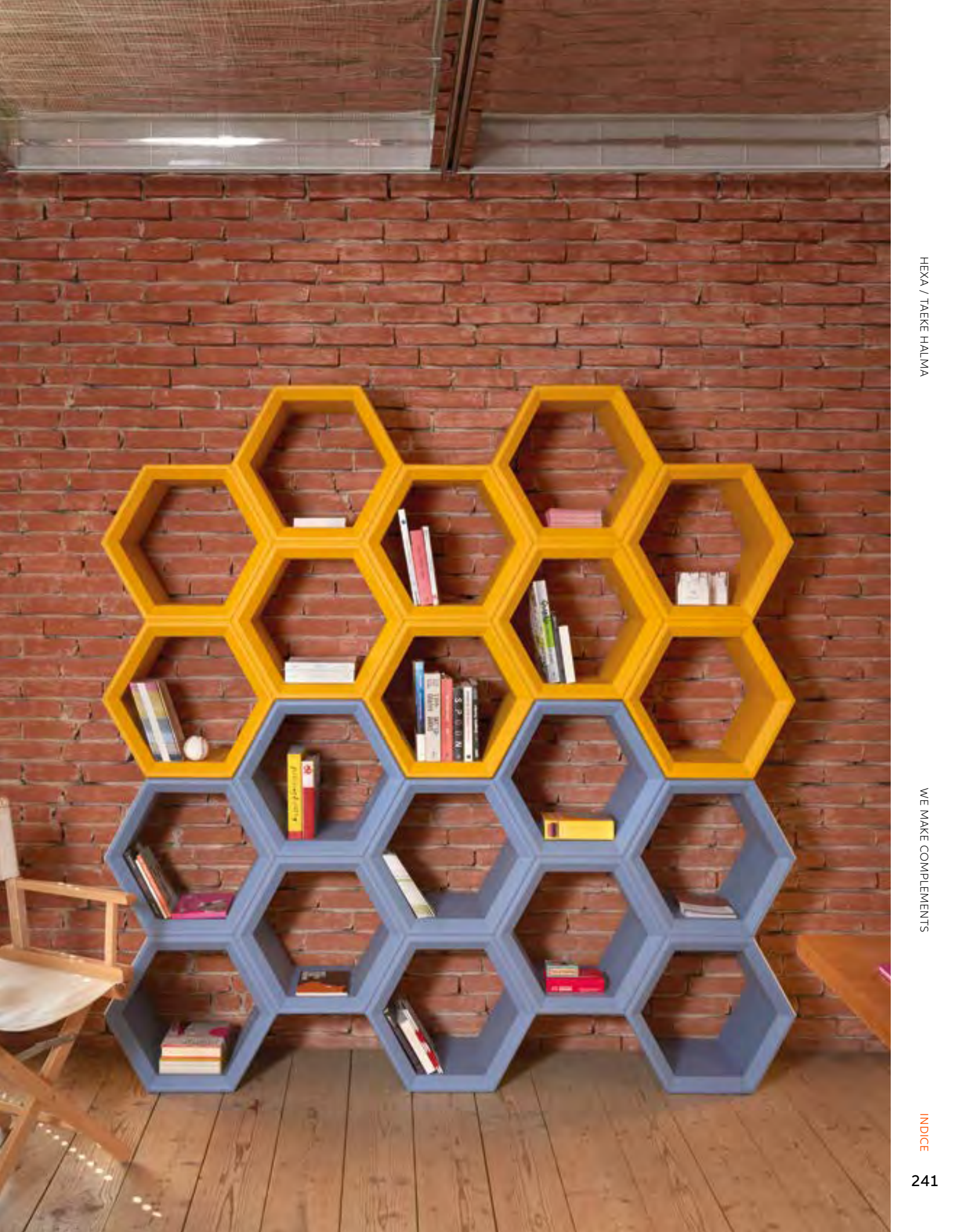
HEXA

Design
TAEKE HALMA

category **bookcase**
material **polyethylene**



“In the design I tried to create an object that looks playful and light, but it is actually extremely resistant. The hexagonal shape of the individual cells allows the user to personalize each cell, and this will automatically create a rather artistic picture of the various objects as they are not aligned in a strict horizontal fashion”.



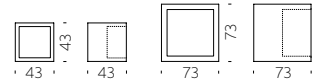
OPEN CUBE

Design
SLIDE STUDIO

category **modular display**
material **polyethylene**

OPEN CUBE / SLIDE STUDIO

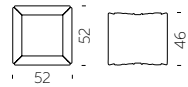
WE MAKE COMPLEMENTS



JOKER OF LOVE

Design
MORO & PIGATTI

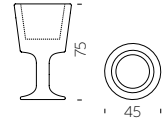
category **modular display**
material **polyethylene**



LIGHT DRINK

Design
JORGE NAJERA

category **bottle rack**
material **polyethylene**



LIGHT DRINK / JORGE NAJERA

WE MAKE COMPLEMENTS



KALIMERA

Design
SLIDE STUDIO

Kalimera is the indispensable co-protagonist to light up cheers with irony and playfulness. Kalimera means "Good morning" in Greek language: thanks to its shape that reminds an eggshell, this bottle rack is ideal to give an informal touch to every indoor and outdoor settings.

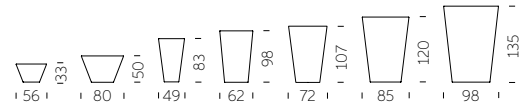
category **bottle rack**
material **polyethylene**



X-POT COLLECTION

Design
SLIDE STUDIO

category pot
material polyethylene



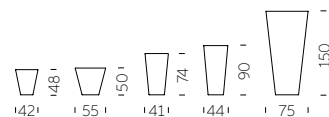
Colourful and minimal: its double wall and round base make X-Pot ideal to every kind of settings. The different dimensions of pots let X-Pot family give a touch of colour and luminous elegance in private gardens or terraces, or to host the guests in hotels, restaurants or shops.



Y-POT COLLECTION

Design
SLIDE STUDIO

category pot
material polyethylene



Luminous or lacquered, in lively colours or total white:
Y-Pot is the true character to customize indoor or outdoor
settings. The square shape and the different dimensions of
Y-Pot are suitable for contract projects as well as domestic areas.

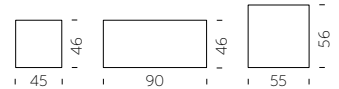


QUADRA

Design
GIÒ COLONNA ROMANO

Quadra is a collection of pots that have got a simple and linear shape but the surface is made richer by horizontal streaks, that give facets and movement to the whole product. The simple shape and its elegance make Quadra family ideal in every indoor e outdoor settings.

category **pot**
material **polyethylene**



QUADRA / GIÒ COLONNA ROMANO

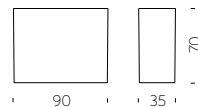
WE MAKE COMPLEMENTS



QUADRA SEPARÉ

Design
GIÒ COLONNA ROMANO

category pot/separé
material polyethylene



QUADRA SEPARÉ / GIÒ COLONNA ROMANO

WE MAKE COMPLEMENTS

INDICE

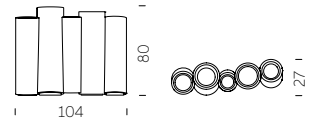
251



BAMBOO

Design
TOUS LES TROIS

category cachepot/separè
material polyethylene



Bamboo is a flowerpot, versatile and multiple that meets the most diverse needs in terms of space set-up. This colourful flowerpot is a multi-functional item for indoor and outdoor settings: its high and thin structure let Bamboo to be a flowerpot but also a separè.



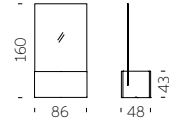
PRIVÉ

PRIVÉ / SLIDE STUDIO

Privé is a pot with a sinuous design that becomes an elegant divider, when it is completed with panel in plexiglass. Privé is sophisticated but functional at the same time, thanks to its modularity. For this reason it is a perfect option for small and big areas, both indoor and outdoor.

Design
SLIDE STUDIO

category **pot/separè**
material **polyethylene**
plexiglass



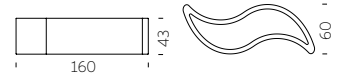
WE MAKE COMPLEMENTS



WAVE POT

Design
SLIDE STUDIO

category pot
material polyethylene



WAVE POT / SLIDE STUDIO

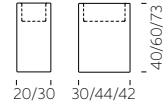
WE MAKE COMPLEMENTS

INDICE

BASE POT

Design
SLIDE STUDIO

category pot
material polyethylene



BASE POT / SLIDE STUDIO

WE MAKE COMPLEMENTS

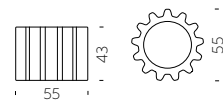


GEAR POT

Design
ANASTASIA IVANYUK

Gear Pot is inspired by the typical shape of a mechanical gear. It is modular: many Gear Pot can be put on top of or beside each other, interlocking like a real gear, to create playful and colourful compositions, turning any space into a unique setting.

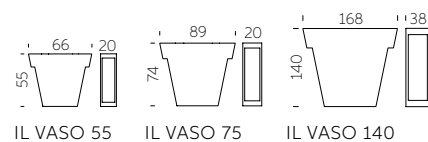
category **pot**
material **polyethylene**



IL VASO COLLECTION

Design
GIÒ COLONNA ROMANO

category pot
material polyethylene



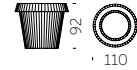
“Versatile and minimalist, Il Vaso uses different dimensional plans to create playful furnishing. The design of Il Vaso is a stylized pot, as a comic book version of the traditional garden item”.



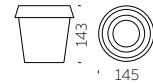
GIÒ COLLECTION

Design
GIÒ COLONNA ROMANO

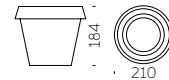
category pot
material polyethylene



GIÒ TONDO



BIG GIÒ



GIÒ MONSTER



The typical flowerpot becomes oversize and with a multifaceted surface: these are the main features of Giò Tondo, Big Giò and Giò Monster. The macro reinterpretation of pots of everyday use creates huge pots that immediately draw attention to them.



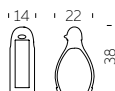
COMPLEMENTS

YOU MAY ALSO LIKE



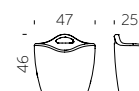
KOKÒ BOOK

design GIÒ COLONNA ROMANO
category magazine rack
material polyethylene



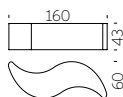
MAG

design ELI JACOBSON
category magazine rack
material polyethylene



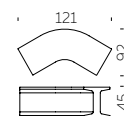
WAVE

design GIÒ COLONNA ROMANO
category bench
material polyethylene



IRON

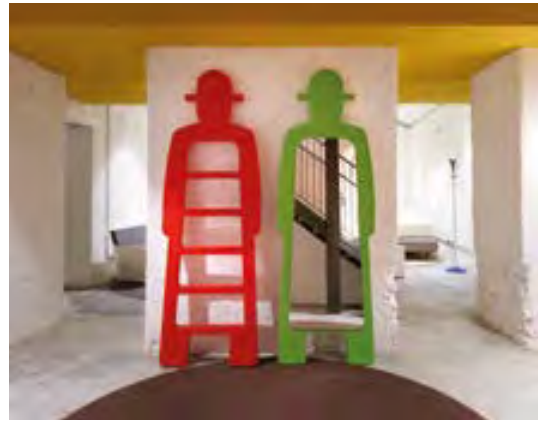
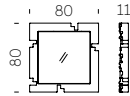
design SEBASTIAN BERGNE
category modular bench
material polyethylene





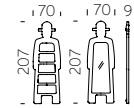
PIXEL

design **STUDIO TONINO**
 category **mirror**
 material **polyethylene**
 mirror



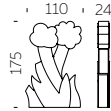
MR. GIÒ + MR. GIÒ SPECCHIO

design **GIÒ COLONNA ROMANO**
 category **valet + mirror**
 material **polyethylene**
 mirror



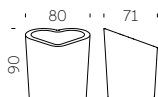
MYFLOWER

design **FLAVIO LUCCHINI**
 category **separè**
 material **polyethylene**



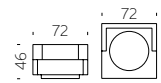
MON AMOUR

design **ALEX SACCHETTI**
 category **pot/bottle rack**
 material **polyethylene**



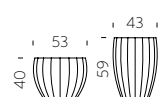
CUBIC YO

design **GIULIO CAPPELLINI**
 category **pot**
 material **polyethylene**
 nr.4 wheels



STAR

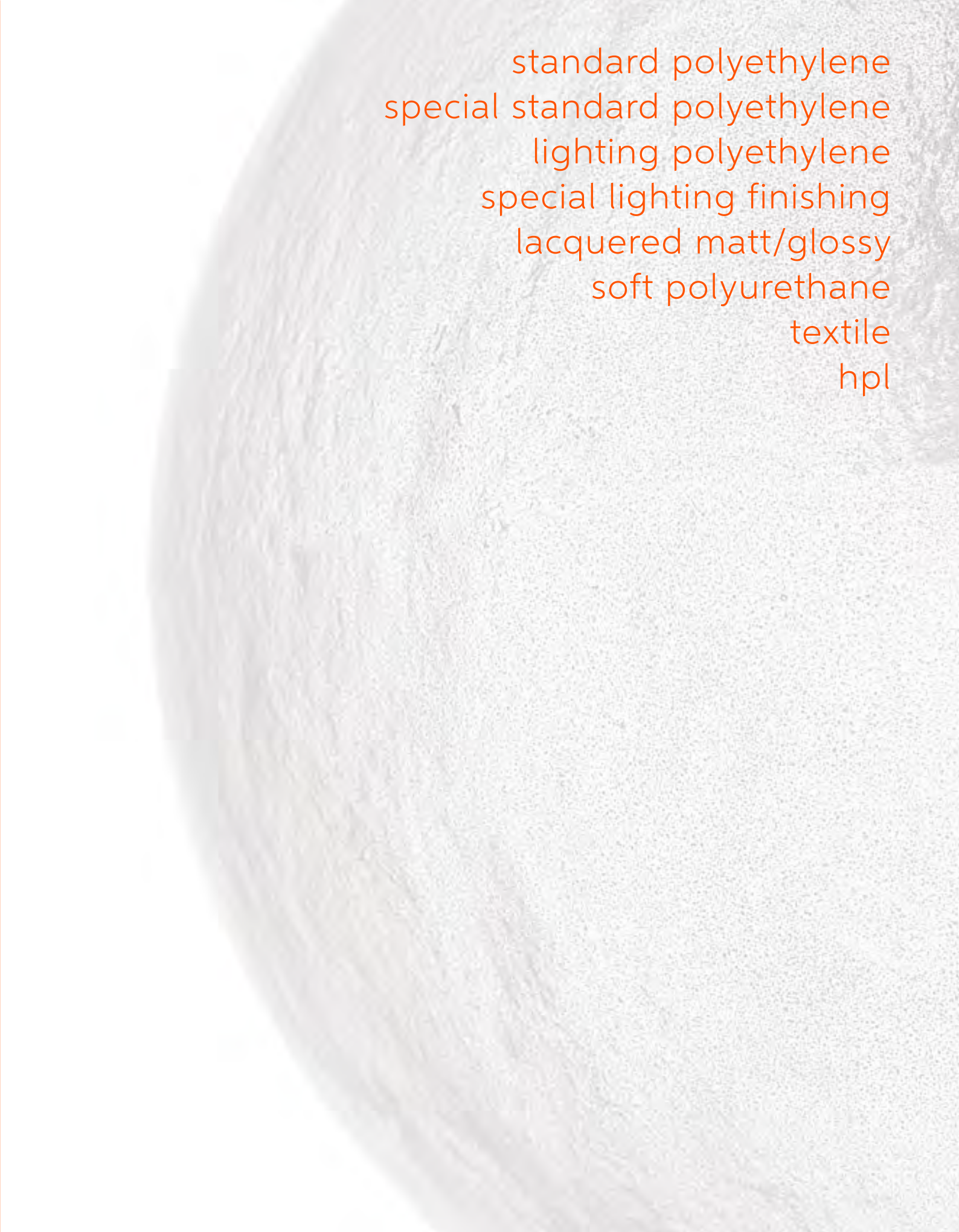
design **SLIDE STUDIO**
 category **pot**
 material **polyethylene**



We Make

MATERIALS

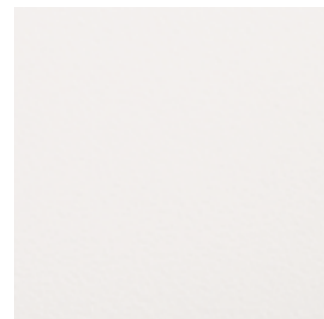
L'alta qualità dei nostri prodotti deriva dalla materia prima utilizzata, ma non solo. In questi anni abbiamo impreziosito il polietilene con lavorazioni uniche e accessori innovativi.



standard polyethylene
special standard polyethylene
lighting polyethylene
special lighting finishing
lacquered matt/glossy
soft polyurethane
textile
hpl

STANDARD POLYETHYLENE

La materia prima che più ci rappresenta: il polietilene a bassa densità, 100% riciclabile e in alcuni colori totalmente ottenuto da plastica riciclata. I nostri 13 colori standard vanno dai colori più accesi a quelli più neutri, per adattarsi a ogni esigenza.



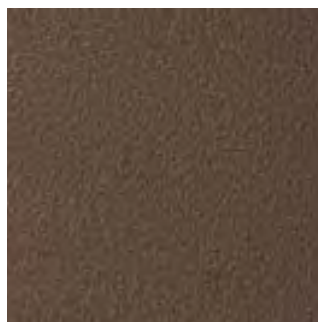
milky white



jet black



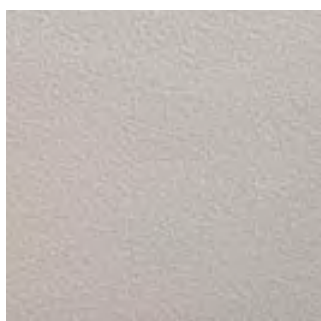
elephant grey



chocolate brown



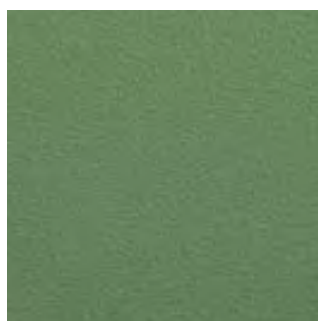
argil grey



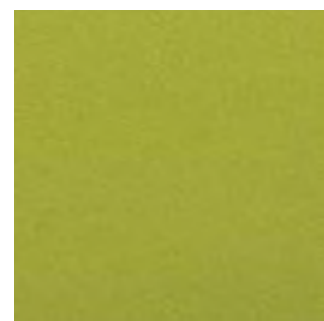
dove grey



powder blue



malva green



lime green



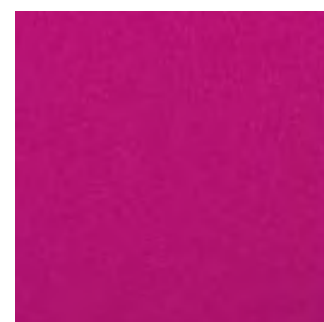
saffron yellow



pumpkin orange



flame red



sweet fuchsia



SPECIAL STANDARD POLYETHYLENE

Per esaltare maggiormente alcuni prodotti, abbiamo creato colori ad hoc. Oltre a nuance e lavorazioni uniche che donano l'effetto marmo o pelle al nostro polietilene, abbiamo introdotto anche nuovi materiali di origine organica o che danno una seconda vita alla plastica.



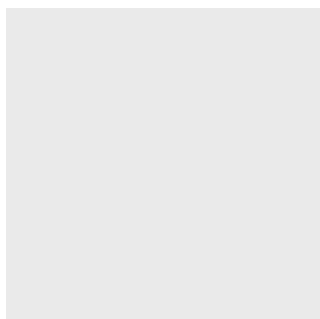
sahara sand



savannah land



namibian desert



coconut grey



grapes blue



avocado green



plum purple



mahogany leather



saddle leather



granito



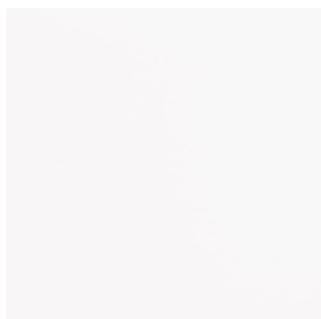
arabescato



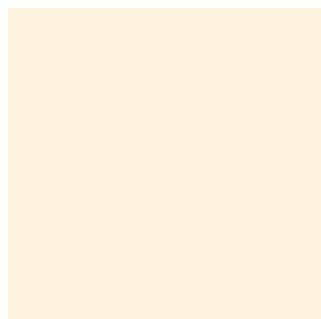
LIGHTING POLYETHYLENE

Colori caldi e atmosfere invitanti: i nostri colori luminosi lasciano trasparire in modo omogeneo la luce che emana la lampadina contenuta al loro interno. Light White e Light Vanilla sono perfetti per indoor e outdoor, gli altri colori esclusivamente per ambienti indoor.

WE MAKE MATERIALS



light white



light vanilla



light blue



light green



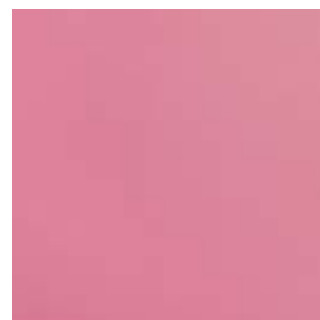
light yellow



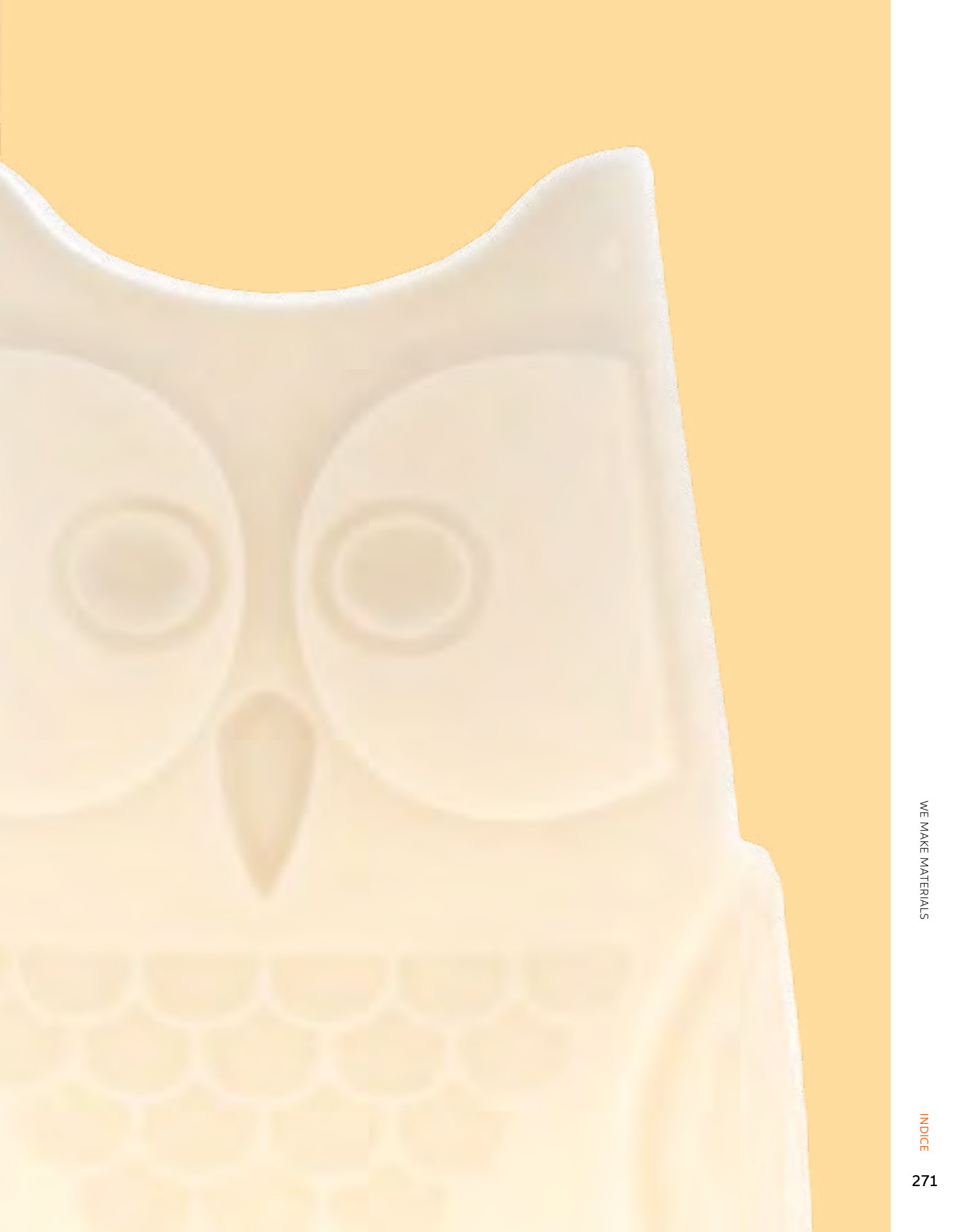
light orange



light red



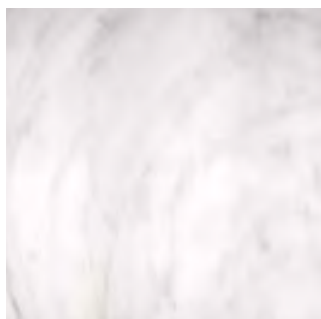
light pink



SPECIAL LIGHTING FINISHING

Per rendere più preziose le nostre lampade, sono tante le lavorazioni che facciamo. Effetto marmo o carta di riso, le finiture luminose speciali impreziosiscono alcuni dei nostri prodotti. Le finiture speciali ricoprono l'intera superficie del prodotto, donando morbidi effetti di luce.

WE MAKE MATERIALS



PE grey veinings marble



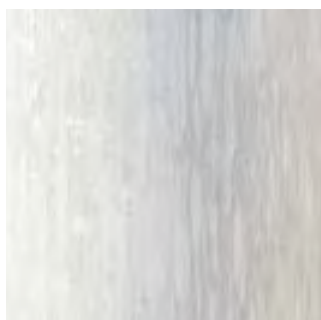
PE red veinings marble



PE japanese paper



SAN transparent blown glass



METHACRYLATE silky white



FIBERGLASS beige grey



FIBERGLASS sapphire blue



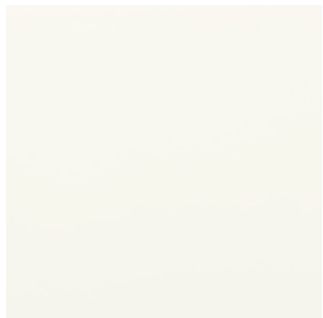
FIBERGLASS rubine red



LACQUERED MATT/GLOSSY

La finitura più lussuosa che c'è: i colori laccati possono essere lucidi, opachi o metallizzati e donano un tocco glamour ai nostri prodotti. Su richiesta, è possibile personalizzare al massimo il colore del prodotto: un RAL particolare, oppure utilizzare più colori.

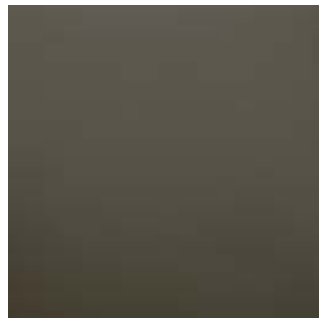
WE MAKE MATERIALS



absolute white



glamour black



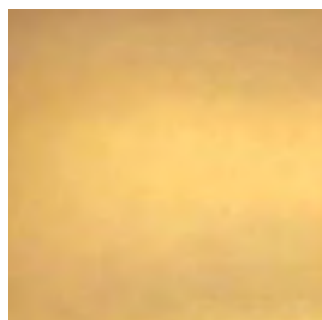
vanity grey



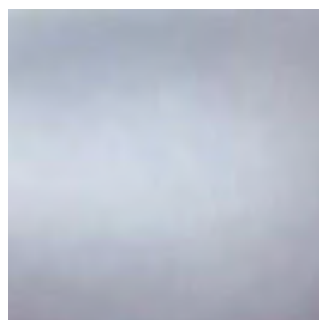
charming ivory



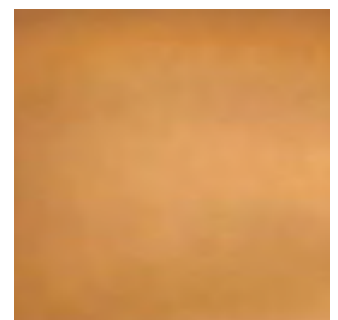
supreme red



metallic gold



metallic silver



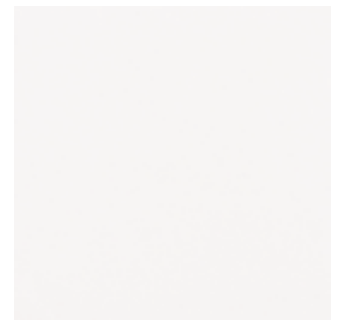
metallic copper



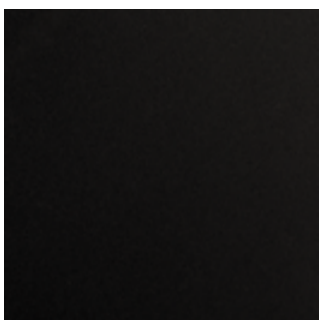
SOFT POLYURETHANE

I nostri prodotti in poliuretano morbido sono comodi, ideali per outdoor, facili da mantenere e da pulire. Dalle forme essenziali o più estrose, i prodotti in poliuretano morbido offrono una seduta comoda e tanti colori differenti.

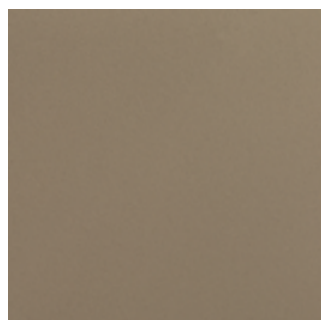
WE MAKE MATERIALS



soft white



soft black



soft argil



soft yellow

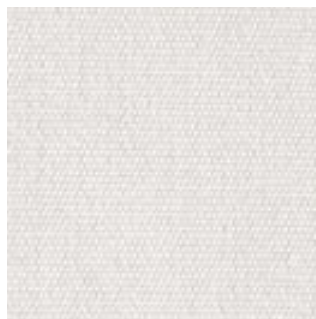


soft red



TEXTILE

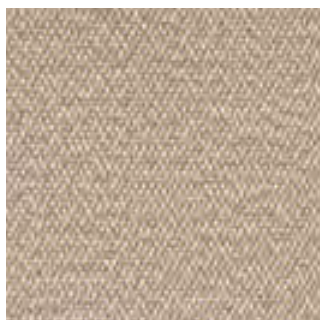
Le sedute diventano sempre più comode, senza rinunciare alla qualità: alcuni nostri prodotti hanno infatti cuscini morbidi ricoperti in tessuto impermeabile o in ecopelle. Sfoderabili e lavabili in lavatrice, aumentano il tuo relax in outdoor.



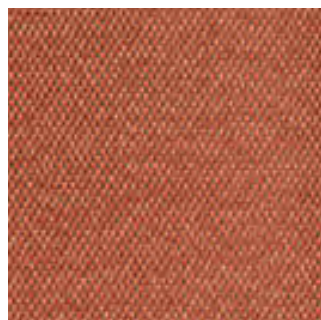
cotton white



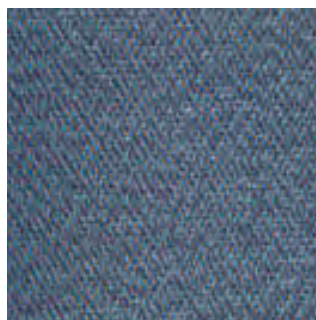
london brown



dune sand



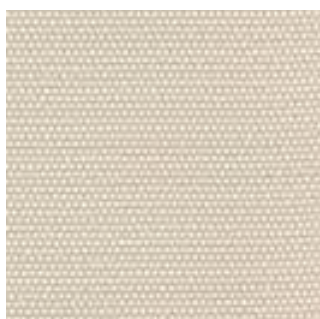
earth orange



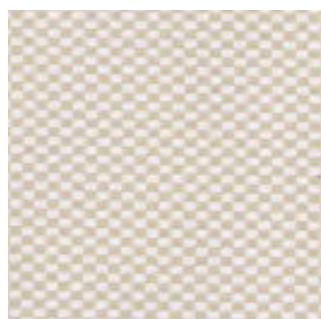
river blue



mineral grey



avena



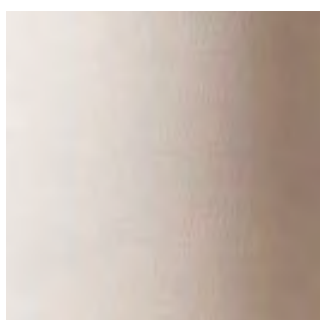
simmetria avena



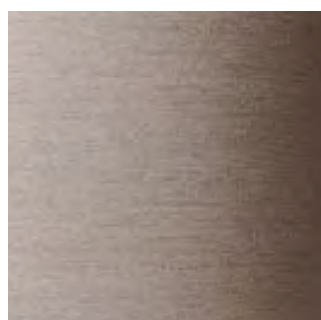
rosemary green



simmetria green



ivory white



melange ecru



ECOLEATHER cream



ECOLEATHER light grey



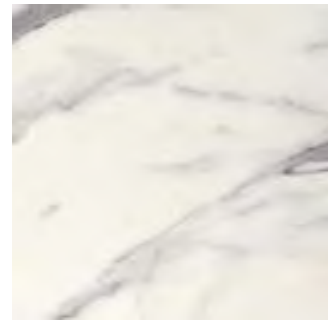
HPL

I nostri top sono realizzati in HPL, un materiale facile da pulire e da mantenere, leggero e resistente. I top sono disponibili nel classico bianco o con nuance che richiamano le texture naturali del marmo e delle pietre.

WE MAKE MATERIALS



white



calacatta



sierra



cementino



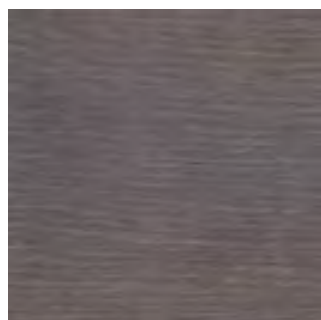
ardesia



imperiale veneto



rovere



wengé



light grey



saddle leather




SLIDE srl


Via Lazio 14
20090 Buccinasco (Milano)
Italy

showroom
Foro Buonaparte 57
20121 Milano - Italy

info@slidedesign.it
www.slidedesign.it

 @SLIDEdesignmilano

 @slidedesign

 SLIDE srl

Questa pubblicazione è stata ideata
e prodotta da SLIDE srl.

art direction

Ilaria Marelli Design
Slide Studio
Daniele Porta

foto

Miro Zagnoli - www.mirozagnoli.it

ringraziamenti

p.13 - Ph. Carlo Lavatori - Archivio Alessandro Mendini.

pp.16-17 - Gianluigi Donnarumma e Alessia Elefante, Elisabetta Gregoraci, Natasha Stefanenko,
Mauro Porcini, Lino Borrelli, Maud Anais Poudra, Studio Streberle, Thea (ph. Alberto Gorlini).

p.229 - Dalini.ch

stampa

Rotolito Spa - Milano

© GIUGNO 2022 SLIDE Srl

Immagini e caratteristiche tecniche riportate nel presente catalogo sono indicativi. SLIDE srl si riserva il diritto di effettuare qualsiasi modifica senza alcun preavviso. Per ulteriori informazioni, consultare il sito istituzionale oppure contattare gli uffici commerciali.

SLIDE